

## TR426, TR427 User Guide Mode d'emploi

French Guide Included  
Mode d'emploi  
en français inclus

Please find the separate car seat instruction manual that came with your car seat.  
Veuillez trouver le manuel d'instructions du siège d'auto fourni séparément avec votre siège d'auto.

# Zelia<sup>™2</sup> & Zelia<sup>™2</sup> Max

## 5-in-1 Modular Travel System

©2020 Dorel Juvenile Group, Inc. (800) 951-4113 [www.maxicosi.com](http://www.maxicosi.com). Styles and colors may vary. Les styles et les couleurs peuvent varier. Made in CHINA. Fabriqué en CHINE. Distributed by (distribué par) Dorel Juvenile Group, Inc., 2525 State St., Columbus, IN 47201-7494. Dorel Juvenile Canada, 2855 Argentinia Road, Unit 4, Mississauga, ON L5N 8G6. Importado y Distribuido en Chile por: Comercial e Industrial Silfa S.A. - San Ignacio 0201 / Parque Industrial Portezuelo Quilicura, Santiago Chile. Fono (562) 2339 9000. En Perú por: Comexa S.A. - Los Libertadores 455 - San Isidro, Lima - Perú. Fono (511) 4469014. En Centro América, Caribe y Ecuador por: Best Brands Group S.A. - Av. Balboa, Bay Mall Plaza, Planta Baja, local 9, Panamá. - Fono: (507) 300 2884. En Colombia por: Baby Universe S.A.S. - Vía 40 No. 77-29, Barranquilla, Colombia - Fono: (575) 353 1110 Importador: DJGM, S.A. DE C.V. Gabriel Mancera No. 1041 Col. Del Valle, Benito Juárez C.P. 03100 México, Ciudad de México R.F.C. DJG140305GN9 Tel. (55) 67199202 12/10/20 4358-8034A

**DORÉL**

# Warnings

i

## Table of Contents

Warnings	i	Care and Maintenance	10
Parts and Features	1	Replaceable Parts	10
Assembly	2-4	Warranty	10
To Use	4-9		

## WARNING

### FOR THE SAFETY OF YOUR CHILD, PLEASE READ THE FOLLOWING WARNINGS AND ASSEMBLY INSTRUCTIONS AND KEEP FOR FUTURE REFERENCE.

- Adult assembly required. **CAUTION:** Keep small parts away from children during assembly.
- **NEVER LEAVE CHILD UNATTENDED. ALWAYS** keep child in view when in stroller.
- **AVOID SERIOUS INJURY** from falling or sliding out. **ALWAYS** use seat belt. Check frequently to make sure it is secure.
- **ALWAYS** keep fingers away from moving parts, when folding, unfolding or adjusting stroller to prevent finger entrapment.
- **ALWAYS** make sure stroller is **FULLY OPEN AND LOCKED** before using.
- **ALWAYS** use the brakes when stroller is stopped.
- **ALWAYS** remove protective material and poly bags and dispose before assembly.
- **NEVER** put hot liquids in the cup holder.
- **NEVER** use stroller on stairs or escalators.
- **NEVER** rollerblade with stroller.
- **NEVER** allow children to play with or hang onto the stroller.
- **NEVER** allow children to climb into the stroller unassisted. Stroller may tip over and injure child.

- **NEVER** place or hang parcels, bags or accessories on the handle or canopy. The stroller may tip over or the canopy may collapse.
- This product will become unstable if a parcel bag or rack is used when there is no provision for one.
- This product may become unstable if a parcel bag, other than the one recommended by the manufacturer is used.
- This product will become unstable if the manufacturer's recommended load is exceeded.
- Care must be taken when folding and unfolding the stroller to prevent finger entrapment.
- **DO NOT** carry additional children, goods or accessories in or on this product except as recommended in the manufacturer's instructions.
- **NEVER** place more than 1-lb. (0.5-kg) in cup holder.
- **NEVER** place more than 10-lbs. (4.5-kg) in the storage basket. If weight is exceeded, hazardous unstable conditions may exist.
- **STROLLER** is only for use with children up to 50-lbs. (22.7-kg), and **WHEN SEATED**, the midpoint of the child's head is at or below the top of the stroller seat.
- **ONLY** use this stroller with **ONE** child at a time.
- Child may slip into leg openings and strangle. Always use carriage in reclined position.
- For children who can sit up unassisted, the stroller seat can be used in the upright/reclined position. For newborn babies, only use the stroller in carriage mode or with an appropriate infant car seat.

# Zelia<sup>2</sup> & Zelia<sup>2</sup> Max

# Parts and Features

1



- A** Adjustable height handle
- B** Cup holder
- C** Frame fold release button (2)
- D** Frame
- E** Rear wheels (2)
- F** Front wheels (2)
- G** Car seat adapters
- H** Seat mount hubs (2)
- I** Fold handle
- J** Frame lock
- K** Canopy with peek-a-boo window
- L** Seat recline/fold lever
- M** Seat recline clip
- N** Seat/Carriage
- O** Seat removal buttons (2)
- P** Bumper bar

Please find the separate car seat instruction manual that came with your car seat.  
Veuillez trouver le manuel d'instructions du siège d'auto fourni séparément avec votre siège d'auto.

- Lay out and identify all parts.
- Please do not return this product to the place of purchase. To address any issues or for helpful information on assembly, installation or use, please visit us at [www.maxicosi.com](http://www.maxicosi.com), or call Consumer Care at (800) 951-4113.
- Include the model number and manufacture date (found on stroller frame) and a brief description of the part.
- Keep these instructions for future use.

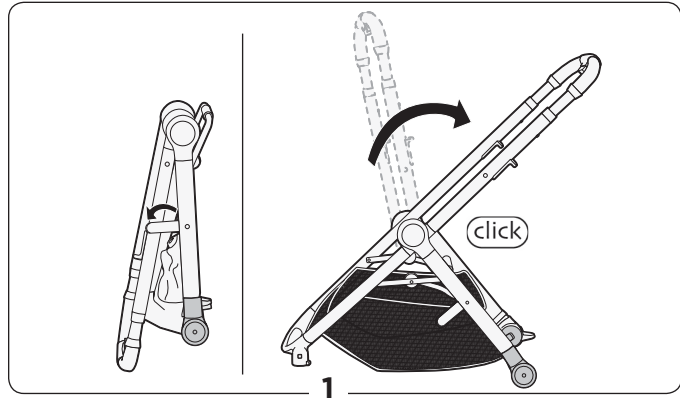
# Zelia² & Zelia² Max

# Assembly

2

## 1 Unlock Stroller

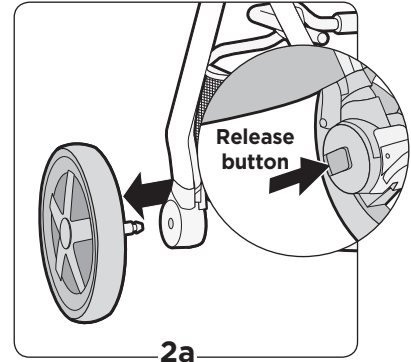
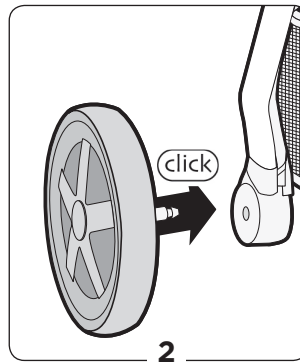
Release frame lock while pulling up on the handlebar until you hear a “click” (Figure 1).



## 2 Install Rear Wheels

Insert rear wheel axle into the frame until you hear a “click” (Figure 2). Repeat for other rear wheel. Pull to confirm wheels are assembled securely.

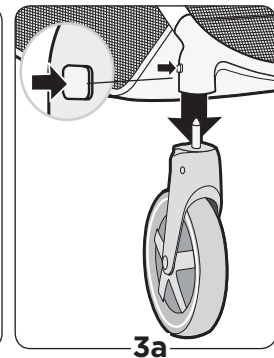
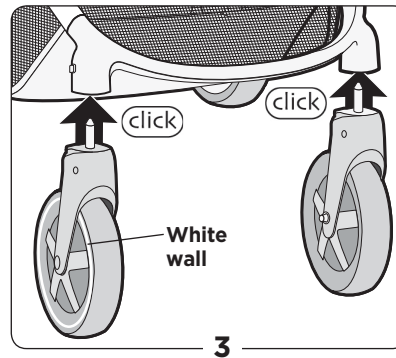
**To remove rear wheel**, press release button on frame and pull wheel off (Figure 2a).



## 3 Install Front Wheels

Arrange the wheels with the white wall facing outward. Insert front wheels until you hear a “click” (Figure 3).

**NOTE:** Depress front wheel release button and pull off wheel (Figure 3a).



# Zelia<sup>2</sup> & Zelia<sup>2</sup> Max



## **⚠️ WARNING**

- Child may slip into leg openings and strangle. Always use carriage in reclined position.
- **DO NOT** use stroller in reclined carriage position with an older child that can lift up on hands and knees.

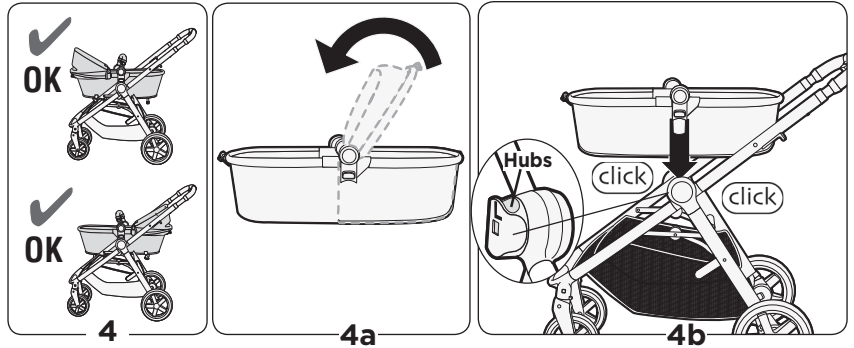
### 4 Install as a Carriage

NOTE: The carriage may face forward or toward the handlebar (Figure 4).

Unfold carriage (Figure 4a). Ensure clip behind the leg rest is detached (Figure 6d).

Lower seat/carriage onto hubs until you hear each side “click” (Figure 4b). Pull up to confirm seat is assembled securely.

NOTE: See page 4, step 6 to convert seat to carriage mode.



### 5 Install as a Seat

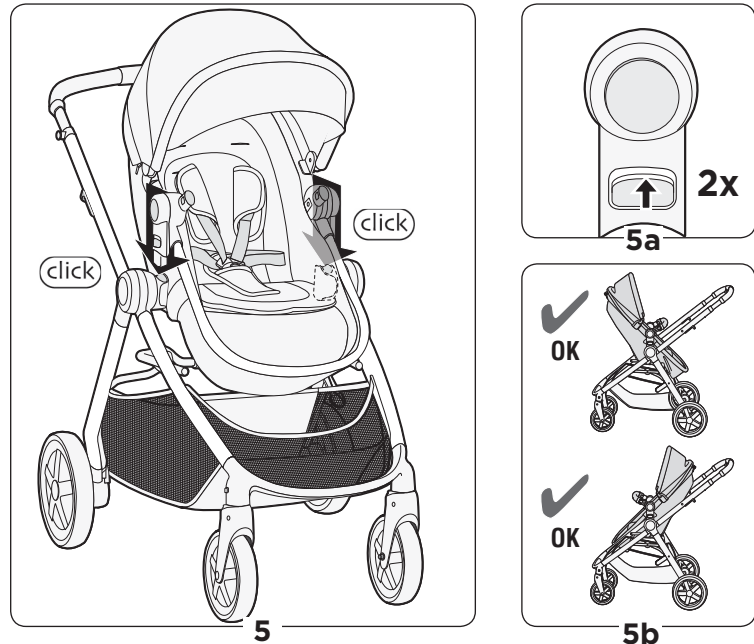
Unfold seat/carriage until it clicks.

Lower seat onto hubs until you hear each side “click” (Figure 5). Pull up to confirm seat is assembled securely.

NOTE: Seat may face forward or toward the handlebar.

**To remove seat:** Press upward on release buttons on both sides while lifting seat off frame (Figure 5a). Reverse seat and lower onto hubs until you hear each side “click.”

NOTE: See page 4, step 6 to convert carriage to seat mode.



## 6 Convert between Carriage and Seat

NOTE: The carriage may face forward or toward the handlebar (Figure 6).

Detach the seat recline clip located on the upper half of the seat back (Figure 6a) to let the seat back drop down (Figure 6b).

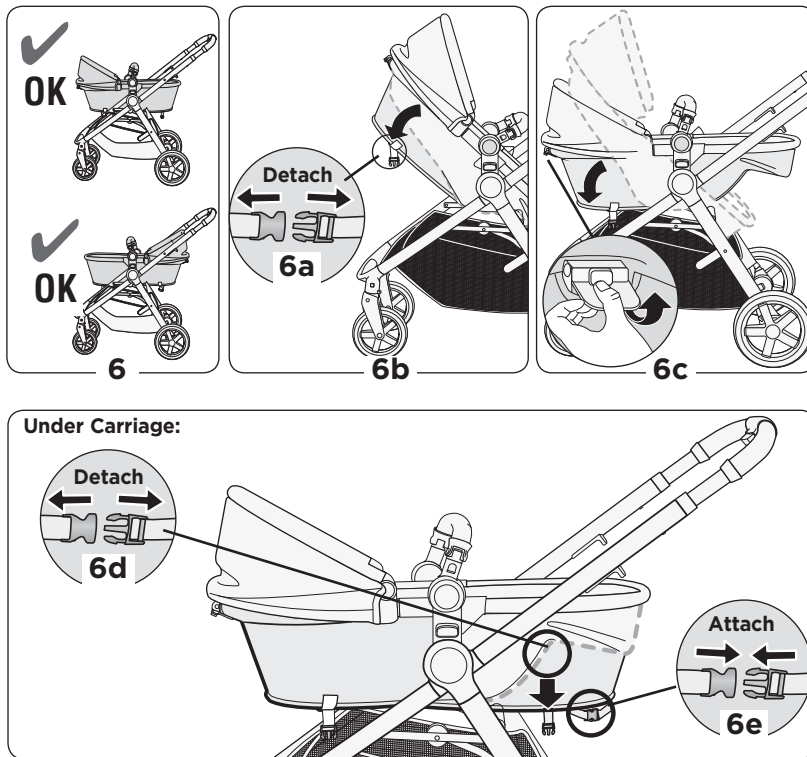
Locate the Recline/Fold lever at the top of the seat frame. Lift the Recline/Fold lever and rotate the seat back until it is flat (Figure 6c).

NOTE: Remove seat from stroller frame and flip the seat upside down for easier access to clips. To remove seat, see page 3, step 5.

Detach clip behind leg rest (Figure 6d).

Attach clip behind foot rest (Figure 6e).

Reverse procedure to convert back to seat.



## 7 Bumper Bar

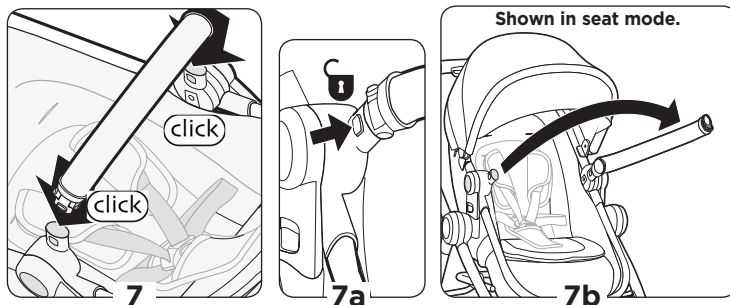
Insert posts on bumper bar into holes on frame until you hear them “click” (Figure 7).

Pull to confirm it is assembled securely. **IMPORTANT:** Always secure the child with the restraining straps.

**To open bumper bar:** Press one release button and pull out on one side (Figures 7a and 7b).

**To remove bumper bar:** Press both release buttons while lifting off.

NOTE: **DO NOT** use the bumper bar to lift or carry stroller.



## 8 Canopy

Press clips onto each side of the seat (Figure 8). Ensure that the clips are flush against the stroller frame (Figure 8a).

Push the seat recline/fold lever through the opening in the rear of the canopy (Figure 8b).

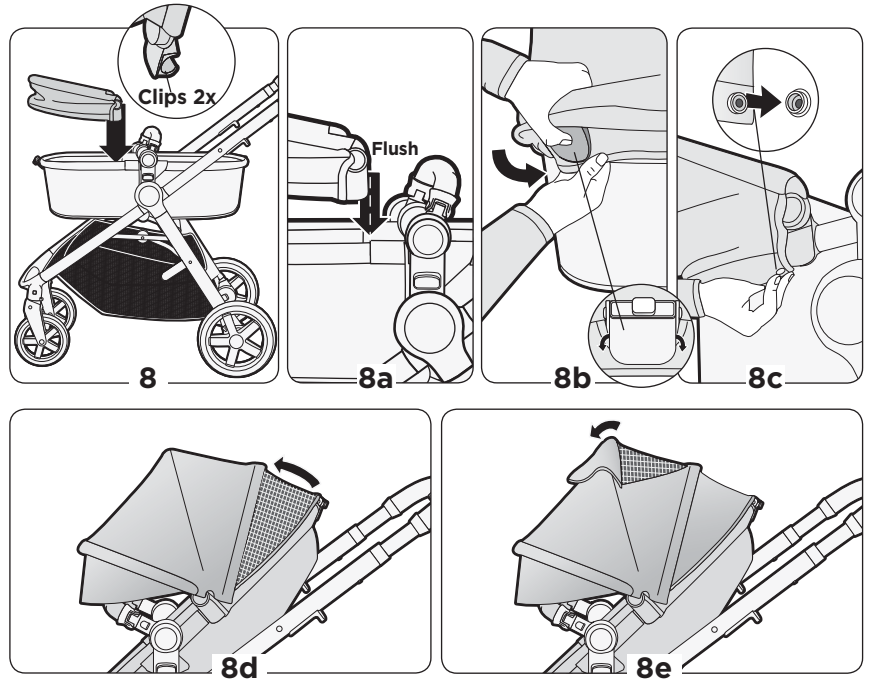
Attach metal snaps on the canopy to snaps on the frame (Figure 8c).

Extend the canopy. NOTE: Depending on your model's canopy style, you can extend the canopy in two ways.

**For both styles:** At the front of the canopy, pull outward on the flip-out visor.

**Style 1:** At the back of the canopy (closest to the handlebar), unzip the canopy to reveal a mesh panel that provides additional coverage (Figure 8d).

**Style 2:** At the back of the canopy (closest to the handlebar), lift the fabric flap to reveal a mesh window (Figure 8e).

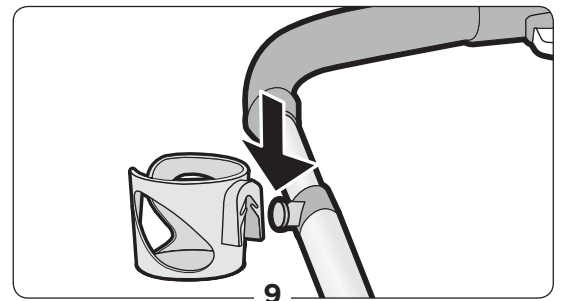


## 9 Cup Holder

Cup holder can be installed on either side of the stroller handle. Slide cup holder down onto knob (Figure 9).

### CAUTION:

- Never hang parcels or accessories from cup holder as the stroller may tip over.
- Never place more than 1-LB (0.5-kg) in cup holder.

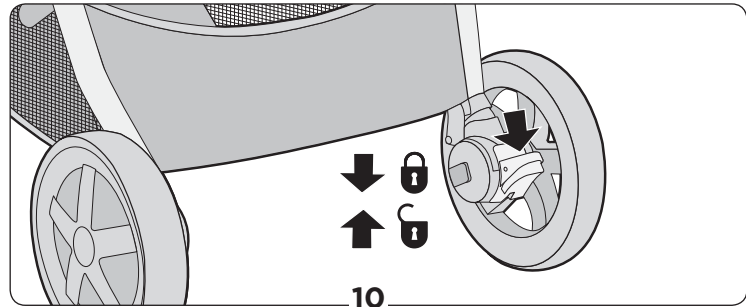


## 10 Parking Brake

Always use the parking brake, even when standing still for only a few moments!

**To lock,** push down on the pedal near the rear wheel (Figure 10).

**To unlock,** lift up on pedal near the rear wheel (Figure 10).

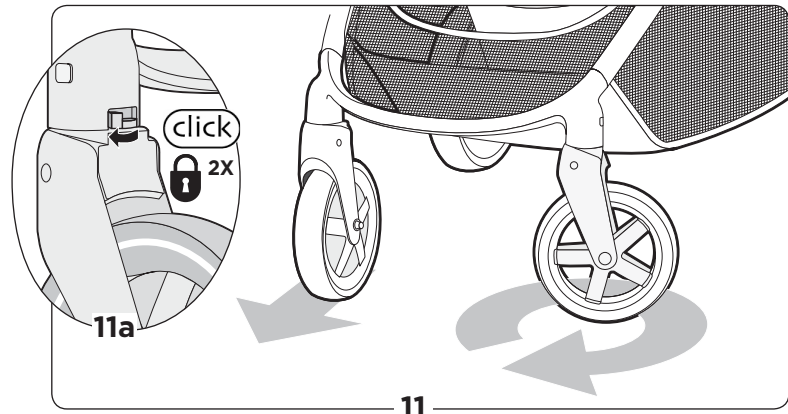


## 11 Swivel Wheel

**TIP:** Lock the swivel wheels when using the stroller in a straight direction for a long period (Figure 11).

**To lock swivel wheels,** push outward on the wheel locks until you hear a “click” (Figure 11a).

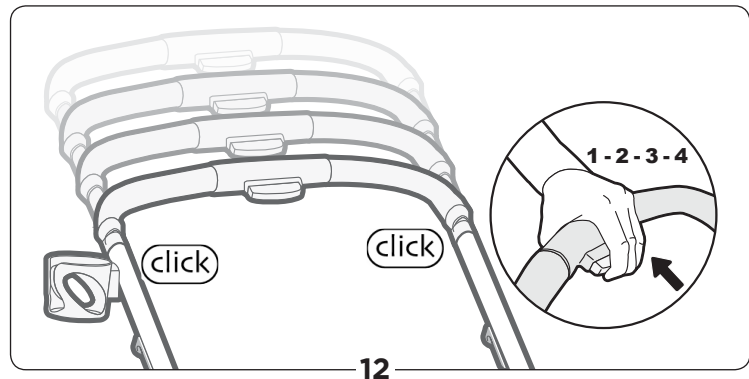
**To unlock swivel wheels,** pull inward on the wheel locks until you hear a “click.”



## 12 Adjust Handlebar Height

Squeeze the adjustment button and slide the handlebar to desired height (Figure 12). Both sides of the handlebar will “click” into place.

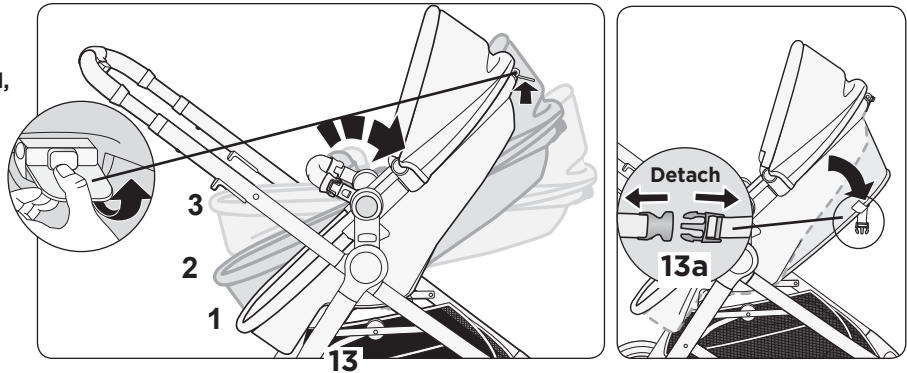
**NOTE:** There are four height positions.



### 13 Adjust Recline

To rotate seat forward or backward, lift the recline/fold lever and rotate seat (Figure 13).

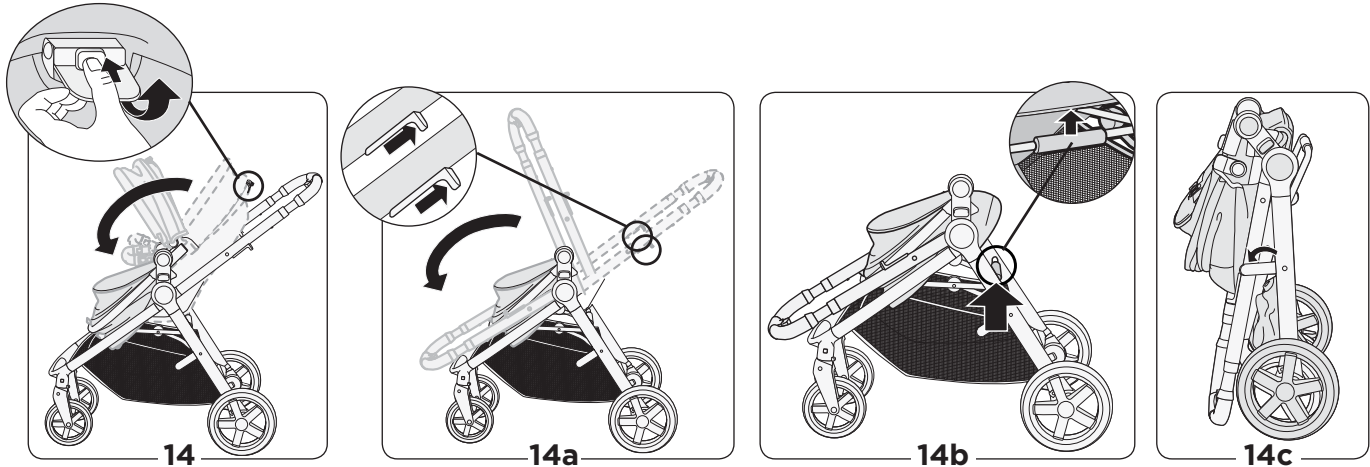
To let seat back drop down, detach the seat recline clip located on the upper half of the seat back (Figure 13a).



### 14 Fold Stroller

NOTE: Seat can remain on frame when folding stroller.

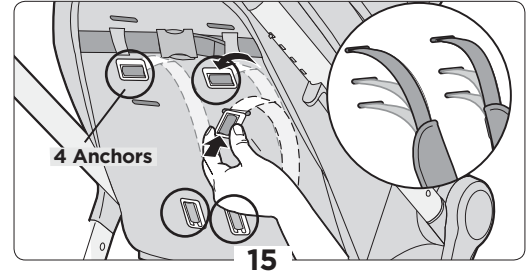
- ① Close canopy.
- ② Press the button while lifting up on seat recline/fold lever and fold seat forward (Figure 14).
- ③ Pull up on both handlebar releases and fold handlebar forward (Figure 14a).
- ④ Pull up on frame fold handle and lift upward to fold stroller (Figure 14b).
- ⑤ Latch the frame lock. Stroller will stand when folded (Figure 14c). Note: Stroller can also be folded without the seat (Steps 14a-14b).



**! WARNING:** • For proper installation of the restraint system, make sure all four (4) anchors lay flat against the back board. • **NEVER** use stroller without BOTH restraint and crotch straps. **WHEN SEATED**, the midpoint of the child's head is at or below the top of the stroller seat.

## 15 Adjust Restraint Height

The shoulder straps have three height positions for your growing child. Push each anchor through the seat back and into the desired slot (Figure 15). Be sure the anchors lay flat against the seat back (Figure 15).



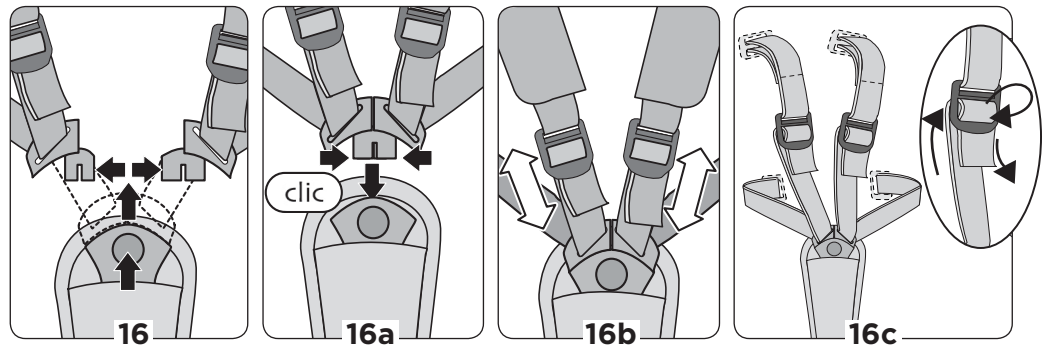
## ! WARNING

- **NEVER LEAVE CHILD UNATTENDED. ALWAYS** keep child in view when in stroller.
- **AVOID SERIOUS INJURY** from falling or sliding out. **ALWAYS** use seat belt. Check frequently to make sure it is secure. Belts must be threaded exactly as shown (Figures 16c and 16d).
- Failure to follow these instructions could result in the serious injury or death of your child.

## 16 To Use Restraint System

Unbuckle restraint system by pressing center button (Figure 16). Place your child in the stroller, with the crotch strap between the child's legs. Fit clips together (Figure 16a). Slide clips into buckle until you hear a "click" (Figure 16a).

Tighten straps snugly around your child (Figure 16b). Re-thread the restraint system if needed, exactly as shown in figure 16c.

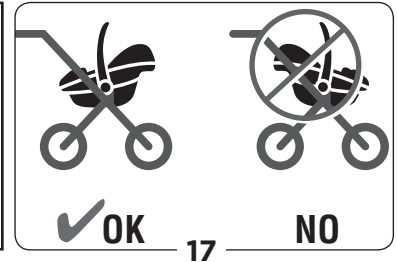




## **⚠ WARNING**

To avoid serious injury:

- Please refer to the manufacturer's instructions for the use of your infant car seat.
- **ALWAYS** remove stroller seat before installing car seat.
- **ALWAYS** install car seat facing to the rear of the stroller (Figure 17).
- **ALWAYS** use the restraint system in the car seat.



Please find the separate car seat instruction manual that came with your car seat.

## 17 To Attach Maxi-Cosi Mico® or Coral™ Series of Infant Car Seats

NOTES:

- Push the parking brake down.
- Remove stroller seat from stroller frame. (Refer to page 3, step 5 to remove seat).
- Stroller seat must be removed to install car seat (Figure 17).

NOTE: Only right side adapter fits into the notch on the right side (Figure 17a).

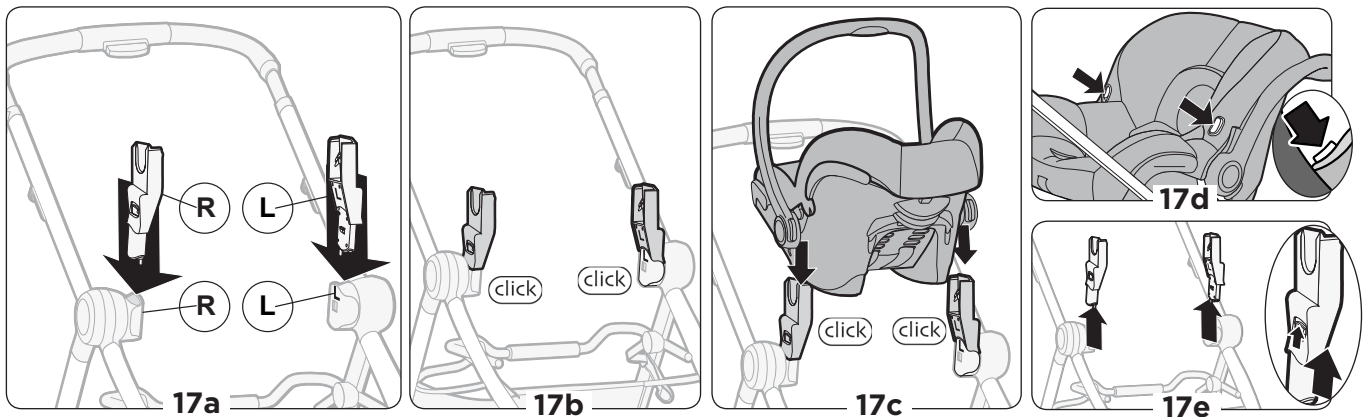
Align car seat adapters with smooth side facing outward as shown. Press adapters into slots (Figure 17b), then slide down until they “click.”

Car seat must face the handlebar. Lower car seat onto adapters until both sides “click” (Figure 17c). Pull up on car seat to be sure it is securely attached.

**To remove Mico infant car seat**, press both buttons on car seat (Figure 17d). Lift car seat up.

**To remove a Coral Infant Car Seat**, pull the release lever on the back of the car seat while lifting up.

**To remove car seat adapters**, push button as shown, then slide upward and remove (Figure 17e).





## Stroller Care and Maintenance

- To clean stroller fabric, crotch buckle pad and restraint straps, use a sponge or damp cloth with cold water and mild soap. Air dry only. Do not use harsh household cleaners or bleach to clean stroller.
- To clean seat cushion and harness covers, machine wash, cold water, gentle cycle. Tumble dry on low heat.
- Periodically, check for loose screws, worn parts, torn material or loose stitching. Tighten or replace parts as needed.

## Replaceable Parts

- Rear wheels (2)
  - Front wheels (2)
  - Harness covers (2)
  - Cup holder
  - Canopy
  - Bumper bar
- To order parts or If any parts are missing, call Consumer Care at (800) 951-4113 or visit our website at [www.maxicosi.com](http://www.maxicosi.com).
  - Include the model number and manufacture date (found on the stroller) and a brief description of the part.

## Two-Year Limited Warranty

Dorel Juvenile Group, Inc. warrants to the original purchaser that this product (Zelia<sup>2</sup> and Zelia<sup>2</sup> Max), is free from material and workmanship defects when used under normal conditions for a period of two (2) years from the date of purchase. Should the product contain defects in material or workmanship Dorel Juvenile Group, Inc., will repair or replace the product, at our option, free of charge. Purchaser will be responsible for all costs associated with packaging and shipping the product to Dorel Juvenile Group Consumer Relations Department at the address noted on the front of this document and all other freight or insurance costs associated with the return. Dorel Juvenile Group will bear the cost of shipping the repaired or replaced product to the purchaser. Product should be returned in its original package accompanied by a proof of purchase, either a sales receipt or other proof that the product is within the warranty period. This warranty is void if the owner repairs or modifies the product or the product has been damaged as a result of misuse.

This warranty excludes any liability other than that expressly stated previously, including but not limited to, any incidental or inconsequential damages.

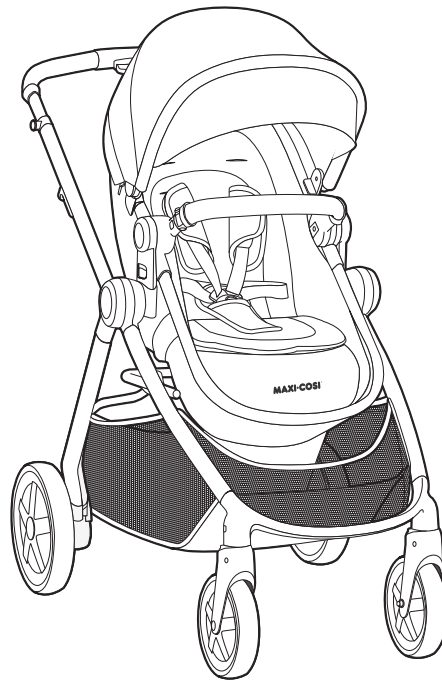
SOME STATES DO NOT ALLOW THE EXCLUSION OR LIMITATION OF INCIDENTAL OR CONSEQUENTIAL DAMAGES, SO THE ABOVE LIMITATION OR EXCLUSION MAY NOT APPLY TO YOU.

THIS WARRANTY GIVES YOU SPECIFIC LEGAL RIGHTS, AND YOU MAY ALSO HAVE OTHER RIGHTS THAT MAY VARY FROM STATE TO STATE.





TR426, TR427  
Mode d'emploi



Veuillez trouver le manuel d'instructions du  
siège d'auto fourni séparément avec votre  
siège d'auto.

Please find the separate car seat instruction  
manual that came with your car seat.

# Zelia<sup>™2</sup> & Zelia<sup>™2</sup> Max

Poussette/Système de voyage  
modulaire 5-en-1

©2020 Dorel Juvenile Group, Inc. (800) 951-4113 [www.maxicosi.com](http://www.maxicosi.com). Styles and colors may vary. Les styles et les couleurs peuvent varier. Made in CHINA. Fabriqué en CHINE. Distributed by (distribué par) Dorel Juvenile Group, Inc., 2525 State St., Columbus, IN 47201-7494. Dorel Juvenile Canada, 2855 Argentinia Road, Unit 4, Mississauga, ON L5N 8G6. Importado y Distribuido en Chile por: Comercial e Industrial Silfa S.A. - San Ignacio 0201 / Parque Industrial Portezuelo Quilicura, Santiago Chile. Fono (562) 2339 9000. En Perú por: Comexa S.A. - Los Libertadores 455 - San Isidro, Lima - Perú. Fono (511) 4469014. En Centro América, Caribe y Ecuador por: Best Brands Group S.A. - Av. Balboa, Bay Mall Plaza, Planta Baja, local 9, Panamá. - Fono: (507) 300 2884. En Colombia por: Baby Universe S.A.S. - Vía 40 No. 77-29, Barranquilla, Colombia - Fono: (575) 353 1110 Importador: DJGM, S.A. DE C.V. Gabriel Mancera No. 1041 Col. Del Valle, Benito Juárez C.P. 03100 México, Ciudad de México R.F.C. DJG140305GN9 Tel. (55) 67199202 12/10/20 4358-8034A

**DORÉL**

## Table des matières

Mises en garde	i	Soin et Entretien	10
Pièces et Caractéristiques	1	Pièces de remplacement	10
Assemblage	2-4	Garantie	10
Utilisation	4-9		

## MISES EN GARDE

**POUR LA SÉCURITÉ DE VOTRE ENFANT, VEUILLEZ LIRE LES MISES EN GARDE SUIVANTES ET LES INSTRUCTIONS D'ASSEMBLAGE ET CONSERVER POUR RÉFÉRENCE ULTÉRIEURE.**

- Doit être assemblé par un adulte.
- **NE JAMAIS LAISSER L'ENFANT SANS SURVEILLANCE. TOUJOURS garder l'enfant bien en vue quand il est dans la poussette.** garder l'enfant bien en vue quand il est dans la poussette.
- **ÉVITEZ LES BLESSURES GRAVES** causées par une chute ou une glissade. **TOUJOURS** utiliser la ceinture de sécurité. Vérifiez fréquemment pour vous assurer qu'elle est bien attachée.
- **TOUJOURS** garder les doigts loin des pièces mobiles au moment de plier, déplier ou d'ajuster la poussette pour empêcher de se coincer les doigts.
- **TOUJOURS** s'assurer que la poussette est **OUVERTE ET VERROUILLÉE COMPLÈTEMENT** avant d'utiliser.
- **TOUJOURS** appliquer les freins lorsque la poussette est arrêtée.
- **TOUJOURS** retirer le matériel protecteur et les sacs en plastique et les jeter avant d'assembler.
- **NE JAMAIS** placer de liquide chaud dans le porte-gobelet.
- **NE JAMAIS** utiliser la poussette dans les marches ou escaliers mécaniques.
- **NE JAMAIS** faire de patins à roues alignées avec la poussette.
- **NE JAMAIS** permettre aux enfants de jouer avec ou se suspendre à la poussette.
- **NE JAMAIS** permettre aux enfant de grimper dans la poussette sans aide. La poussette pourrait basculer et blesser l'enfant.

- **NE JAMAIS** placer de sacs, de colis ou d'accessoires sur la poignée ou l'auvent. La poussette pourrait basculer ou l'auvent pourrait s'affaisser.
- Ce produit deviendra instable si un sac ou un support est utilisé alors qu'il n'y a pas de provision pour un.
- Ce produit deviendra instable si un sac, autre que celui recommandé par le fabricant est utilisé.
- Le produit deviendra instable si la charge recommandée par le fabricant est dépassée.
- Lors du pliage et du dépliage de la poussette, veillez à ne pas vous coincer les doigts.
- **NE PAS** transporter d'enfants supplémentaires, de marchandises ou d'accessoires dans ou sur ce produit à l'exception de ce qui est recommandé dans les instructions du fabricant.
- **NE JAMAIS** placer plus de 0,5 kg (1 lb) dans le porte-gobelet.
- **NE JAMAIS** placer plus de 4.5 kg (10 lb) dans le panier de rangement. Si le poids est excédé, des conditions instables dangereuses peuvent exister.
- **LA POUSSETTE** doit être utilisée avec des enfants jusqu'à 22,73 kg (50 lb) seulement, et **UNE FOIS ASSIS**, le milieu de la tête de l'enfant doit arriver à égalité ou juste en-dessous du sommet du siège de la poussette.
- Utilisez cette poussette **SEULEMENT** avec **UN** enfant à la fois.
- L'enfant peut glisser par les ouvertures pour les jambes et s'étrangler. Toujours utiliser le siège en position allongée en position inclinée.
- Pour les enfants qui peuvent s'asseoir sans aide, le siège de la poussette peut être utilisé en position verticale/inclinée. Pour les nouveau-nés, n'utilisez la poussette qu'en mode landau ou avec un siège d'auto pour bébé approprié.

# Pièces et Caractéristiques

1



- A** Poignée réglable en hauteur
- B** Porte-gobelet
- C** Bouton de dégagement du cadre (2)
- D** Cadre
- E** Roues arrière (2)
- F** Roues avant (2)
- G** Adaptateurs de siège d'auto
- H** Moyeu de montage du siège (2)
- I** Poignée de pliage
- J** Verrou du cadre
- K** Auvent avec fenêtre couverte
- L** Manette d'inclinaison/pliage du siège
- M** Pince d'inclinaison du siège
- N** Siège/Siège en position allongée
- O** Boutons de retrait du siège (2)
- P** Barre de protection

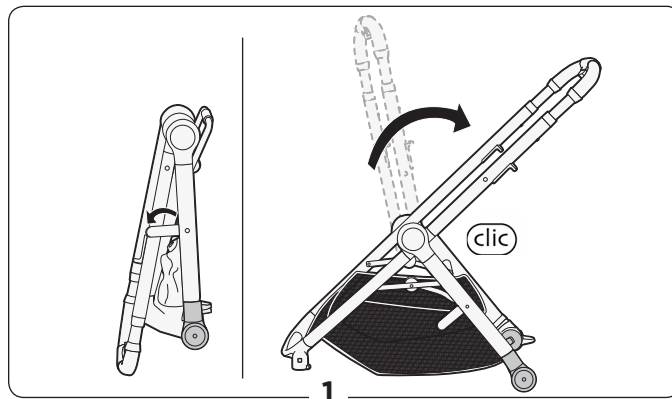
Veillez trouver le manuel d'instructions du siège d'auto fourni séparément avec votre siège d'auto.  
Please find the separate car seat instruction manual that came with your car seat.

- Déballez et identifiez toutes les pièces.
- Veuillez ne pas retourner ce produit au magasin. Pour résoudre tout problème ou pour obtenir des informations utiles sur l'assemblage/ installation ou utilisation, visitez notre site internet au [www.maxicosi.com](http://www.maxicosi.com), ou appelez le Service à la clientèle au (800) 951-4113.
- Inclure le numéro de modèle et la date de fabrication (trouvé sur le cadre de la poussette) et une brève description de la pièce.
- Conservez ces instructions pour utilisation ultérieure.

# Zelia<sup>2</sup> & Zelia<sup>2</sup> Max

### 1 Déverrouiller la poussette

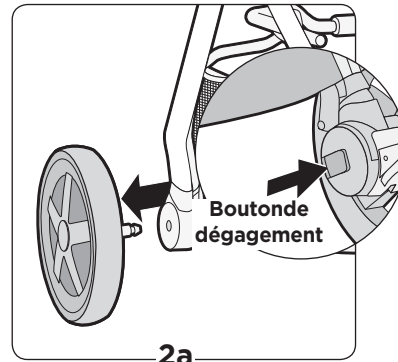
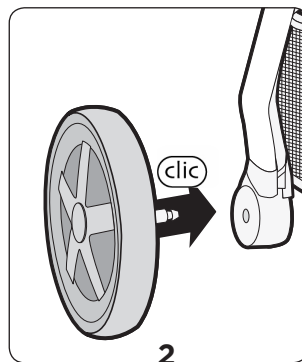
Dégagez le verrou du cadre tout en tirant la poignée vers le haut jusqu'à ce que vous entendiez un « clic » (Figure 1).



### 2 Installer les roues arrière

Insérez l'essieu de la roue arrière dans le cadre jusqu'à ce que vous entendiez un « clic » (Figure 2). Répétez pour l'autre roue arrière. Tirez sur les roues pour vous assurer qu'elles sont fixées solidement.

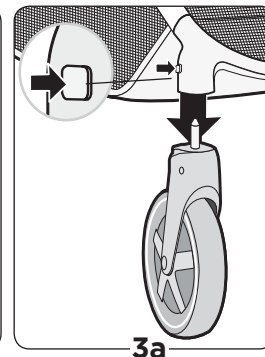
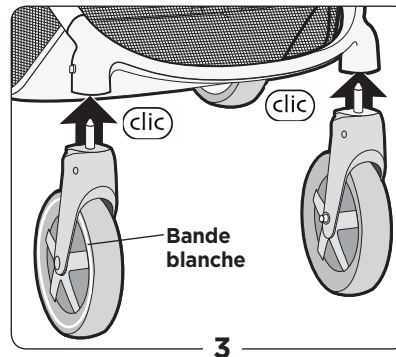
**Pour retirer la roue arrière**, appuyez sur le bouton de déverrouillage du cadre et retirez la roue (Figure 2a).



### 3 Installer les roues avant

Placez les roues avec la bande blanche orientée vers l'extérieur. Insérez les roues avant jusqu'à ce que vous entendiez un « clic » (Figure 3).

NOTE: Appuyez sur le bouton de dégagement de la roue avant et retirez la roue (Figure 3a).



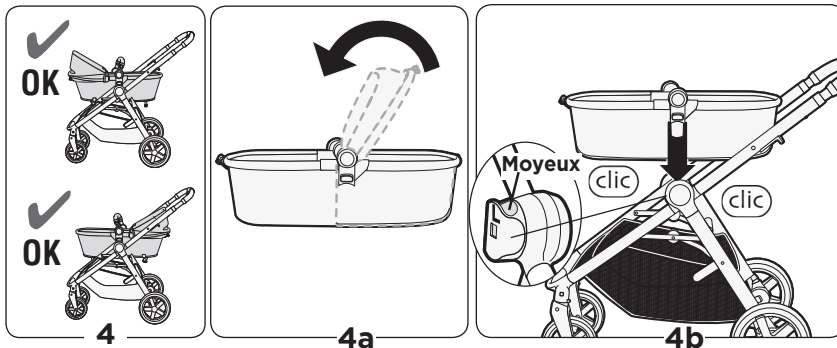
- ⚠ MISE EN GARDE** • L'enfant peut glisser par les ouvertures pour les jambes et s'étrangler. Toujours utiliser le siège en position allongée en position inclinée.
- NE PAS utiliser la poussette en position allongée avec un enfant plus âgé qui peut se mettre à quatre pattes.

## 4 Installer en position allongée

NOTE: Le siège peut être utilisé comme en position allongée face ou dos au cadre (Figure 4). Déplier (Figure 4a). Assurez-vous le clip derrière le repose-pied est détaché (Figure 6d).

Abaissez le siège/siège en position allongée sur les moyeux jusqu'à ce que vous entendiez un « clic » de chaque côté (Figure 4b). Tirez le siège vers le haut pour vous assurer que le siège est fixé solidement.

NOTE: Voir page 4, étape 6 pour convertir le siège en mode carrosse.



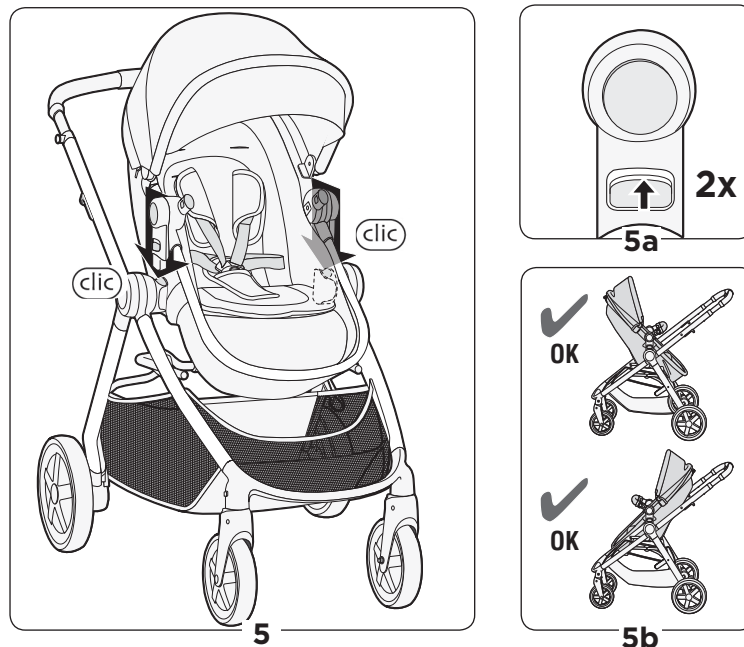
## 5 Installer en tant que siège

Dépliez le siège/siège en position allongée jusqu'à ce que vous entendiez un « clic ». Abaissez le siège/siège en position allongée sur les moyeux jusqu'à ce que vous entendiez un « clic » de chaque côté (Figure 5). Tirez le siège vers le haut pour vous assurer que le siège est fixé solidement.

NOTE : Le siège peut être face ou dos au cadre.

**Pour enlever le siège :** Appuyez vers le haut sur les boutons de dégagement de chaque côté tout en soulevant le cadre pour l'enlever (Figure 5). Retournez le siège et abaissez-le sur les moyeux jusqu'à ce que vous entendiez un « clic » de chaque côté.

NOTE: Voir page 4, étape 6 pour convertir le carrosse en mode siège.



## 6 Passer du siège en position allongée au siège

NOTE: Le siège peut être utilisé comme en position allongée face ou dos au cadre (Figure 6).

Détachez l'attache située sur la moitié supérieure du dossier (Figure 6a) pour permettre au dossier du siège de s'abaisser (Figure 6b).

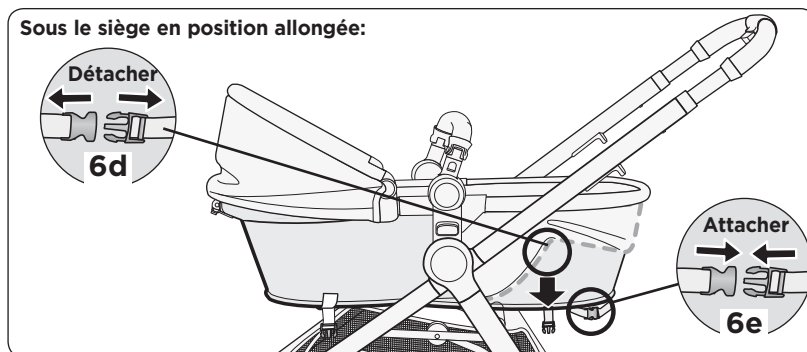
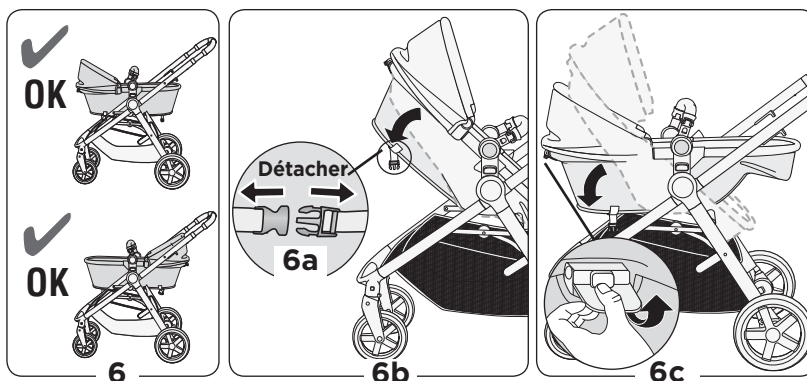
Localisez la manette d'inclinaison/pliage dans la partie supérieure du cadre du siège. Soulevez la manette et faites pivoter le dossier du siège jusqu'à ce qu'il soit à plat (Figure 6c).

NOTE: Enlevez le siège du cadre de la poussette, et retournez le siège à l'envers pour accès plus facile aux clips. Pour retirer le siège, reportez-vous à la page 3, étape 5.

Détachez le clip derrière le repose-jambes (Figure 6d).

Attachez le clip derrière le repose-pied (Figure 6e).

Faites l'inverse pour revenir à la position de siège.

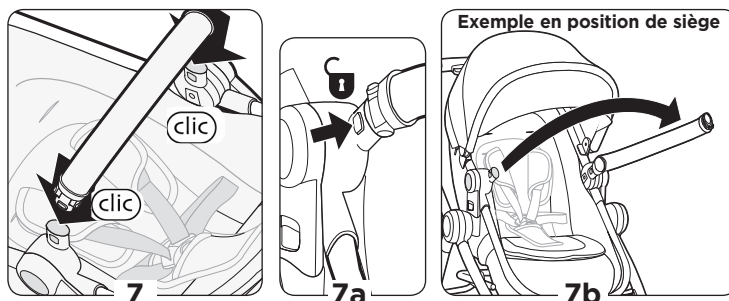


## 7 Barre de protection

Insérez les tiges de la barre de protection dans les trous du cadre jusqu'à ce que vous entendiez un « clic » (Figure 7). Tirez pour vous assurer qu'elle est fixée solidement. **IMPORTANT:** Attachez toujours l'enfant avec les ceintures de sécurité.

**Pour ouvrir la barre de protection,** appuyez sur un bouton de déverrouillage et tirez sur un côté (Figures 7a et 7b).

**Pour enlever la barre de protection,** appuyez sur les boutons de dégagement tout en la soulevant pour l'enlever. NOTE: **N'UTILISEZ PAS** la barre de protection pour soulever ou transporter la poussette.





## 8 Auvent

Appuyez sur les pinces sur chaque côté du siège (Figure 8). Assurez-vous que les pinces sont alignées par rapport au cadre de la poussette (Figure 8a).

Poussez la manette d'inclinaison/pliage du siège dans l'ouverture à l'arrière de l'auvent (Figure 8b).

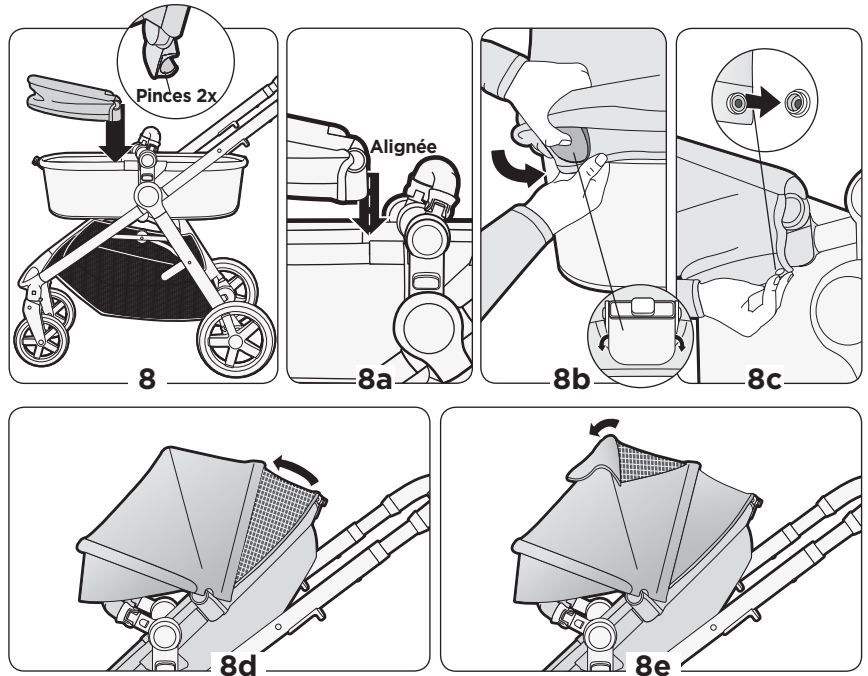
Attachez les boutons-pression métalliques du auvent aux boutons-pression du cadre (Figure 8c).

Étendre l'auvent. NOTE : Selon le style de votre modèle d'auvent, vous pouvez étendre l'auvent de deux façons.

**Pour les deux styles :** À l'avant de l'auvent, tirez vers l'extérieur la visière rabattable.

**Style 1 :** À l'arrière de l'auvent, (le plus près du guidon), dézippez l'auvent pour révéler un panneau en maille qui offre une couverture supplémentaire (Figure 8d).

**Style 2 :** À l'arrière de l'auvent, (le plus près du guidon), soulevez le rabat en tissu pour révéler une fenêtre en maille (Figure 8e).

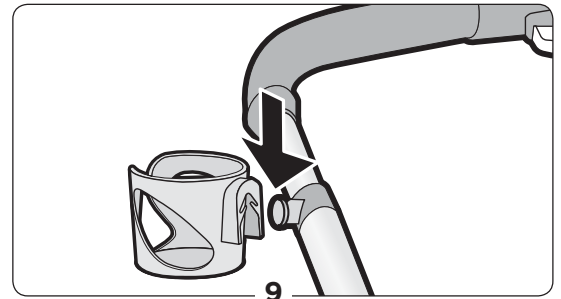


## 9 Porte-Gobelet

Le porte-gobelet peut être installé d'un côté ou de l'autre de la poignée de la poussette. Glissez le porte-gobelet vers le bas sur le bouton (Figure 9).

### ATTENTION:

- Ne jamais suspendre de colis ou d'accessoires au porte-gobelet car la poussette pourrait basculer.
- Ne jamais placer plus de 0.5 kg (1 lb) dans le porte-gobelet.

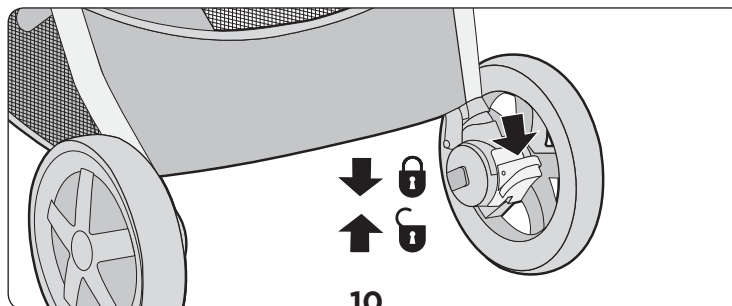


## 10 Frein de stationnement

Toujours appliquer le frein de stationnement, même si vous vous arrêtez que pour un moment!

**Pour verrouiller**, appuyez sur la pédale près de la roue arrière (Figure 10).

**Pour déverrouiller**, soulevez la pédale près de la roue arrière (Figure 10).

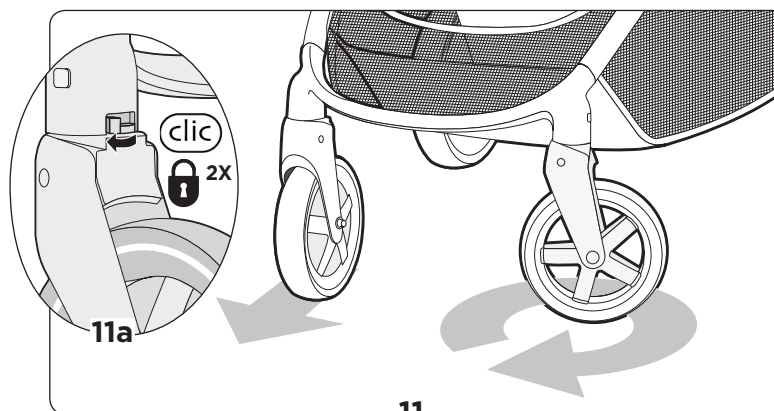


## 11 Roue pivotante

CONSEIL: Verrouillez les roues pivotantes quand vous roulez en ligne droite longtemps (Figure 11).

**Pour verrouiller les roues pivotantes**, poussez vers l'extérieur sur les verrous des roues jusqu'à ce que vous entendiez un « clic » (Figure 11a).

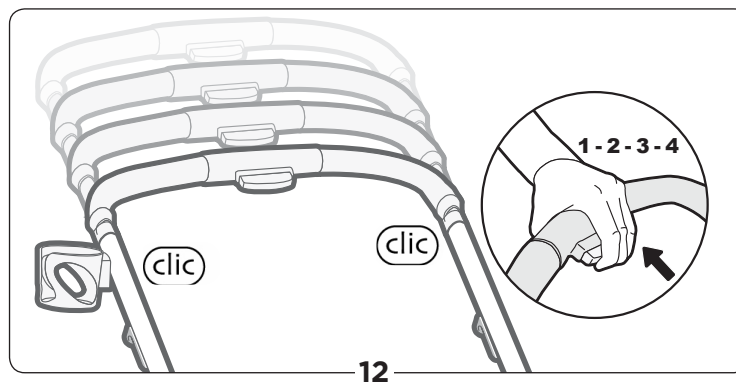
**Pour déverrouiller les roues pivotantes**, tirez vers l'intérieur les verrous des roues jusqu'à ce que vous entendiez un « clic ».



## 12 Ajuster la hauteur de la poignée

Serrez le bouton de réglage et faites glisser la poignée à la hauteur désirée (Figure 12). Les deux côtés de la poignée « cliquera » en place.

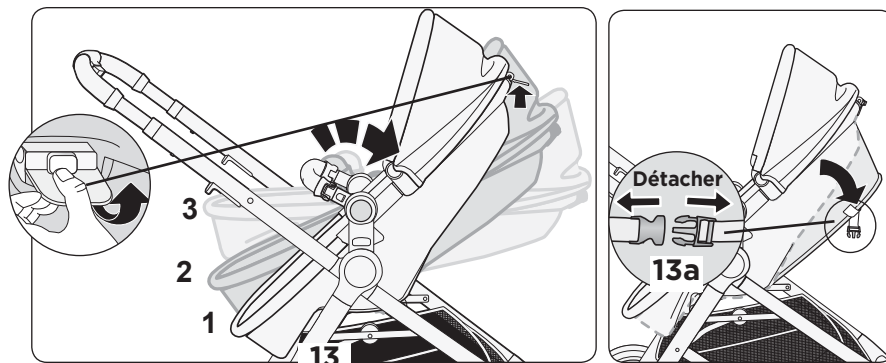
NOTE: Il y a quatre positions de hauteur.



### 13 Ajuster l'inclinaison

Pour faire pivoter le siège vers l'avant ou l'arrière, soulevez la manette d'inclinaison/pliage et faites pivoter le siège (Figure 13).

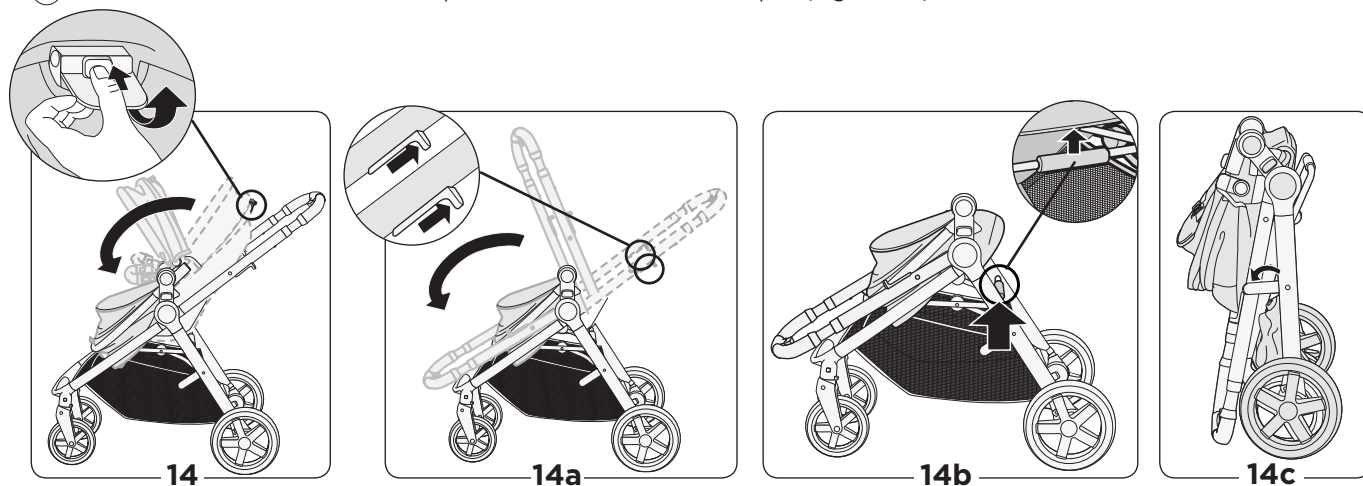
Pour permettre au dossier de s'abaisser, détachez l'attache d'inclinaison du siège située sur la moitié supérieure du dossier (Figure 13a).



### 14 Plier le siège

NOTE: Le siège peut demeurer sur le cadre tout en pliant la poussette.

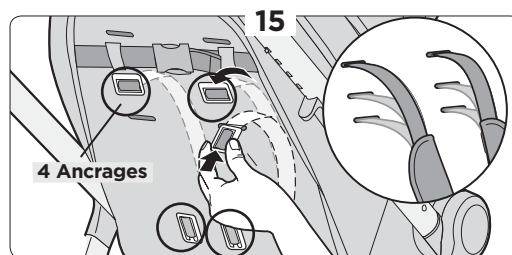
- ① Fermer le auvent.
- ② Appuyez sur le bouton tout en tirant sur la manette d'inclinaison/pliage du siège et pliez le siège vers l'avant (Figure 14).
- ③ Tirez vers le haut les deux pattes de dégagement du cadre et pliez le cadre vers l'avant (Figure 14a).
- ④ Tirez vers le haut sur la poignée de pliage du cadre et soulevez vers le haut pour plier la poussette (Figure 14b).
- ⑤ Verrouillez le verrou du cadre. La poussette se tiendra une fois plié (Figure 14c).



- ⚠ MISE EN GARDE** • Pour installer correctement le système de retenue, assurez-vous que les quatre (4) ancrages reposent à plat contre le dossier.
- **NE JAMAIS** utiliser la poussette si les **DEUX** ceintures et les courroies d'entrejambes ne sont pas attachées.
  - **UNE FOIS ASSIS**, le milieu de la tête de l'enfant doit arriver à égalité ou juste en-dessous du sommet du siège de la poussette.

## 15 Utilisation du système de retenue

Les sangles d'épaules sont réglables à trois positions pour accommoder l'enfant qui grandit. Poussez chaque ancrage dans le dossier du siège et dans la fente désirée (Figure 15). Assurez-vous que les ancrages reposent à plat contre le dossier du siège (Figure 15).

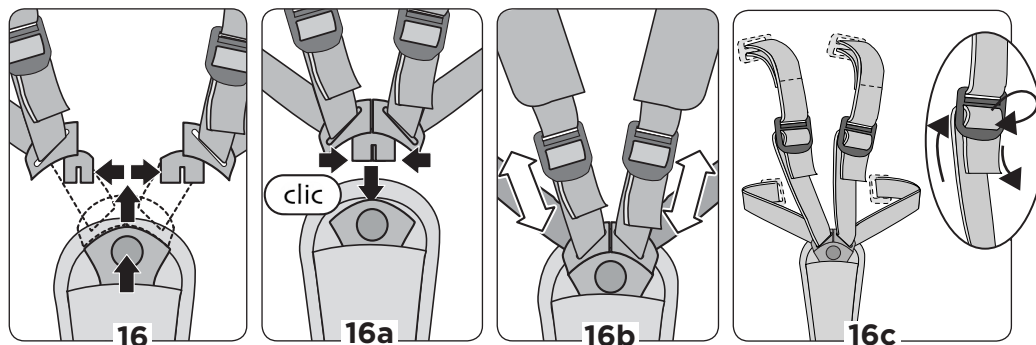


## ⚠ MISE EN GARDE

- **NE JAMAIS LAISSER L'ENFANT SANS SURVEILLANCE. TOUJOURS** garder l'enfant bien en vue quand il est dans la poussette.
- **ÉVITEZ LES BLESSURES GRAVES** causées par une chute ou une glissade. **TOUJOURS** utiliser la ceinture de sécurité. Vérifiez fréquemment pour vous assurer qu'elle est bien attachée. Les ceintures doivent être enfilées exactement comme montré (Figures 16c et 16d).
- Le non-respect de ces instructions peut entraîner des blessures graves ou la mort de votre enfant.

## 16 Utilisation du système de retenue

Débouclez le système de retenue en appuyant sur le bouton au centre (Figure 16). Assoyez votre enfant dans la poussette, avec la courroie d'entrejambes entre les jambes de l'enfant. Adaptez les loquets ensemble (Figure 16a). Glissez les loquets dans la boucle jusqu'à ce que vous entendiez un « clic »

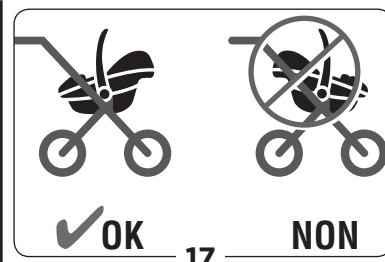


(Figure 16a). Serrez les sangles étroitement autour de votre enfant (Figure 16b). Ré-enfilez le système de retenue si nécessaire, exactement comme indiqué à la figure 16c.

## ⚠ MISE EN GARDE

Pour éviter les blessures graves:

- Veuillez vous référer aux instructions du fabricant pour utiliser votre siège d'auto pour bébé.
- **TOUJOURS** enlever le siège de la poussette avant d'installer le siège d'auto.
- **TOUJOURS** installer le siège d'auto face vers l'arrière de la poussette (Figure 17).
- **TOUJOURS** utiliser les ceintures de sécurité dans le siège d'auto.



**Veillez trouver le manuel d'instructions du siège d'auto fourni séparément avec votre siège d'auto.**

### 17 Pour fixer les sièges d'auto pour bébé Maxi-Cosi® ou Coral™

- Appliquez le frein de stationnement.
- Enlevez le siège de la poussette du cadre de la poussette (Reportez-vous à la page 3, étape 5 Retirer le Siège).
- Le siège de la poussette doit être retiré pour installer le siège d'auto (Figure 17).

NOTE: Seul l'adaptateur droit s'adapte dans l'encoche sur le côté droit (Figure 17a).

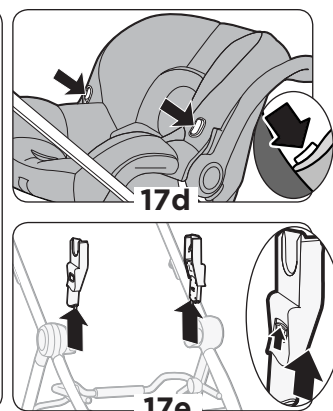
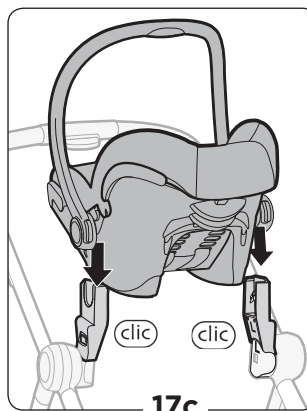
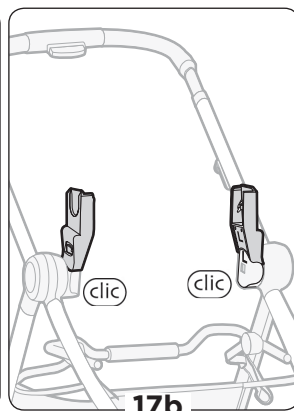
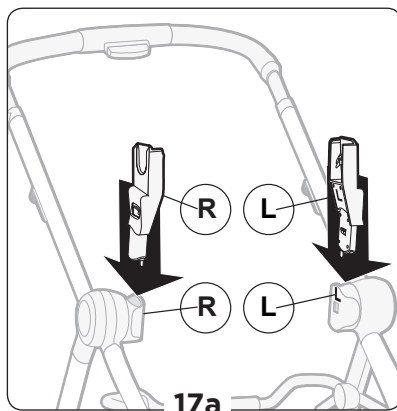
Alignez les adaptateurs de siège d'auto avec le côté lisse orienté vers l'extérieur comme indiqué. Pressez les adaptateurs dans les fentes (Figure 17b), puis glissez jusqu'à ce qu'ils s'enclenchent.

Le siège d'auto doit faire face à la poignée. Abaissez le siège d'auto sur les adaptateurs jusqu'à ce que les deux côtés s'enclenchent (Figure 17c). Tirez le siège d'auto vers le haut pour vous assurer qu'il est solidement fixé.

**Pour enlever le siège d'auto Mico**, appuyez sur les deux boutons du siège d'auto (Figure 17d). Soulevez le siège d'auto.

**Pour retirer un siège d'auto pour bébé Coral**, tirez le levier de déverrouillage à l'arrière du siège d'auto tout en le soulevant.

**Pour enlever les adaptateurs du siège d'auto**, poussez le bouton comme montré, puis glissez vers le haut et enlevez (Figure 17e).



## Soin et Entretien de la poussette

- Pour nettoyer le tissu de la poussette, le coussin de la boucle d'entrejambes et les sangles de retenue, utilisez une éponge ou un chiffon humide avec de l'eau froide et un savon doux. Séchez à l'air seulement. Ne pas utiliser de nettoyeurs domestiques abrasifs ou d'agent de blanchiment pour nettoyer la poussette.
- Pour nettoyer le coussin du siège et les couvre-harnais, laver à la machine, à l'eau froide, au cycle délicat. Sécher par culbutage à basse température.
- De temps à autres, vérifiez pour des vis desserrées, des pièces usées, du matériel déchiré ou décousu. Serrez ou remplacez les pièces au besoin.

## Pièces de remplacement

- Roues arrière (2)
  - Roues avant (2)
  - Couvre-Harnais (2)
  - Porte-gobelet
  - Auvent
  - Barre de protection
- Pour commander des pièces ou si des pièces sont manquantes, appelez le Service aux consommateurs au (800) 951-4113 ou visitez notre site Web à [www.maxicosi.com](http://www.maxicosi.com).
  - Inclure le numéro de modèle et la date de fabrication (trouvé sur la poussette) et une brève description de la pièce.

## Garantie limitée de deux ans

Dorel Juvenile Group, Inc. garantit à l'acheteur original que ce produit, (Zelia<sup>2</sup> et Zelia<sup>2</sup> Max) est exempt de défauts de matériaux et de fabrication lorsqu'il est utilisé dans des conditions normales pour une période d'un (1) an à compter de la date d'achat. Si le produit présente des défauts de matériaux ou de fabrication, Dorel Juvenile Group, Inc. réparera ou remplacera le produit, à notre choix, gratuitement. L'acheteur sera responsable de tous les coûts liés à l'emballage et à l'expédition du produit au Service à la clientèle de Dorel Juvenile Group à l'adresse indiquée sur la page de couverture et tous les autres frais de transport ou d'assurance associés au retour. Dorel Juvenile Group assumera le coût de l'expédition du produit réparé ou remplacé à l'acheteur. Le produit doit être retourné dans son emballage original accompagné d'une preuve d'achat, soit d'un reçu de caisse ou toute autre preuve que le produit est dans la période de garantie. Cette garantie est nulle si le propriétaire répare ou modifie le produit ou si le produit a été endommagé à la suite d'une mauvaise utilisation. Cette garantie exclut toute responsabilité autre que celle expressément indiquée précédemment, incluant mais sans s'y limiter, aux dommages directs ou indirects.

CERTAINES PROVINCES NE PERMETTENT PAS L'EXCLUSION OU LA LIMITATION DE DOMMAGES DIRECTS OU INDIRECTS, PAR CONSÉQUENT LA LIMITATION OU L'EXCLUSION CI-DESSUS PEUT NE PAS S'APPLIQUER DANS VOTRE CAS.

CETTE GARANTIE VOUS DONNE DES DROITS LÉGAUX SPÉCIFIQUES, ET VOUS POUVEZ AUSSI AVOIR D'AUTRES DROITS QUI PEUVENT VARIER D'UNE PROVINCE À L'AUTRE.





**MAXI-COSI**<sup>®</sup>  
We carry the future

## Mico 30 Infant Car Seat

KEEP INSTRUCTIONS  
FOR FUTURE USE.  
Read all instructions  
before using this  
child restraint.



4358-8071  
8.26.20



**WARNING** ⚠ Failure to follow the warnings on the labels and in the instruction manual can result in serious injury or death to your child.



## Overview

Welcome to the Maxi-Cosi family and thank you for choosing this car seat, also known as a child restraint!

To help you get started using your child's new car seat, here are the 4 main tasks you'll need to complete.



### Measure Your Child



### Adjust the Car Seat to Fit Your Child



### Install the Car Seat into Your Vehicle



### Secure Your Child in the Car Seat

Your child's safety is worth the time it will take to read and follow these instructions.

#### Ready? Let's go!

**Pages 1-5** will introduce you to the parts of the car seat.

**Page 82** has our contact information. If at any point you would like assistance, please feel free to reach out to us.

## Quick Navigation



### REAR-FACING

**5-30 lb (2.3-13.6 kg) and  
32 in. (81.3 cm) or less in height  
PAGE 6**



Rear-Facing Child Fit **PAGE 10**



Adjusting Car Seat **PAGES 11-25**



Securing Child **PAGES 26-28**



Install  
with  
Base



Install  
without  
Base



Vehicle  
Belt  
**PAGE 39**



Lower  
Anchor Belt  
**PAGE 45**



Vehicle  
Belt  
**PAGE 52**

## Contents

### Getting Started

Parts of Car Seat .....	1
Accessory Use .....	4
Rear-Facing Use Requirements .....	6
Preparing Car Seat for Child Fit.....	8
Rear-Facing Child Fit .....	10

### Making Adjustments to Car Seat

Changing Harness Strap Position .....	11
Changing Buckle Position .....	13
Harness System Adjustments for Smaller Infants....	16
Removing and Installing Car Seat to Base.....	20
Base Use .....	21
Canopy Use .....	22
Carrier Use .....	24

### Securing Child in Car Seat .....

### Choosing LATCH or Vehicle Belt

LATCH: Lower Anchor Use .....	29
Vehicle Belts .....	31

### Installation in Vehicle

Rear-Facing Use With Base .....	37
Vehicle Belt Install With Base.....	39
LATCH: Lower Anchor Install with Base.....	45
Rear-Facing Use Without Base .....	51
Vehicle Belt Install Without Base.....	52

### Wash & Care of Car Seat Parts

Removing Seat Pad Set for Cleaning .....	57
Removing Harness System .....	59
Cleaning Parts of Car Seat and Installing Seat Pad Set .....	62
Installing Harness System.....	64

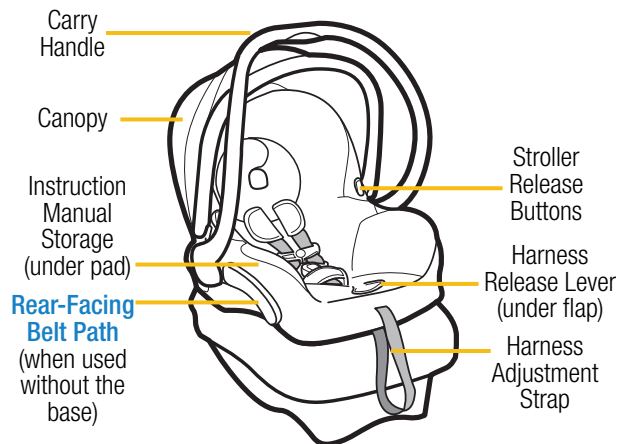
### Safety Information

Aircraft Information .....	68
Replacement and Expiration of Car Seat .....	69
Child Restraint Use.....	71
Installation in Vehicle .....	72
Vehicle Seating Position .....	72
Troubleshooting .....	74
Registration and Safety Notices .....	75

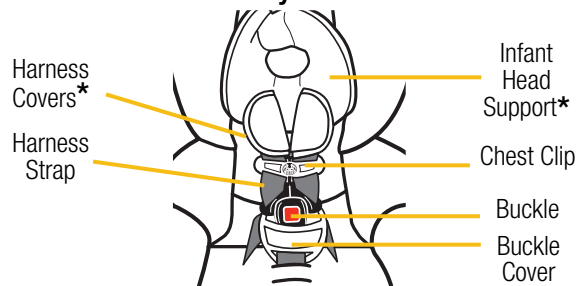
### Additional Information

Warranty .....	77
Replacement Parts List .....	81
Dorel Juvenile Group Information.....	82

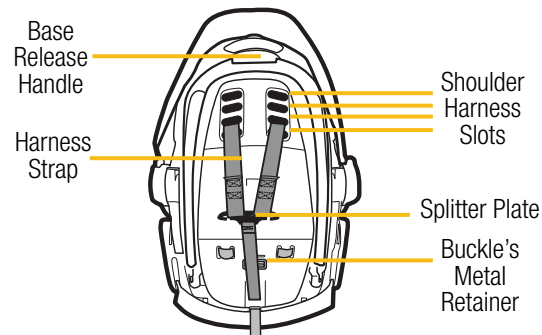
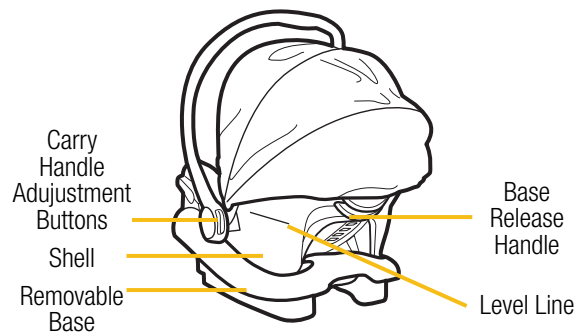
Parts of Car Seat



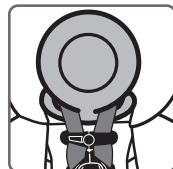
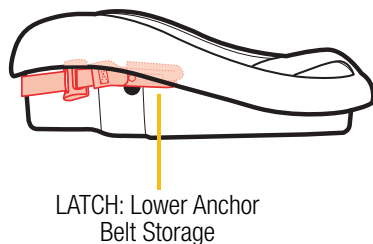
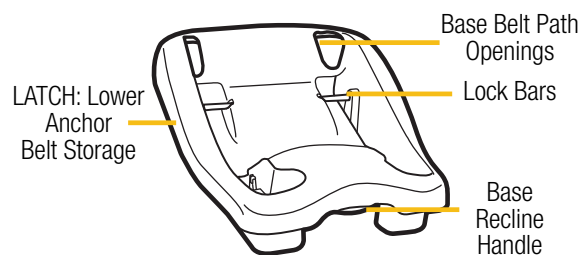
Harness System Detail



\*See pages 4 & 5 for Accessory Use.



continued on next page

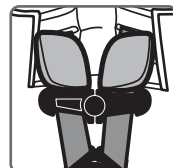
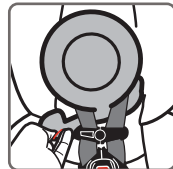


### Infant Head Support

When using the infant head support, make sure it does not cover your child's face in any way.

You may remove it for bigger infants.

**To remove**, pull it off of the harness straps.



### Harness Covers

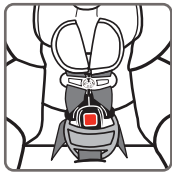
The harness covers help provide comfort to your child's neck. If the harness covers will not allow proper positioning of the chest clip or interfere with getting a tight enough harness fit for a smaller infant, remove and **do not** use.

Store until your child is large enough to use the harness covers while maintaining a properly fitting harness.

**To remove**, pull the fastening strips apart and pull the harness covers off of the harness strap.

*continued on next page*





### Buckle Cover

To remove, unbuckle the harness system and slide the buckle cover off of the buckle.

## Rear-Facing Use Requirements



### Measure your child's weight and height (do not guess) before using this car seat.

Your child's height, weight, and age determine how the car seat should be placed in the vehicle.

Children vary widely in body size, shape, and temperament—**please consult your doctor before switching between any types or modes of a car seat within the limits and fit requirements of the seat.**

### State Laws

Please be certain to follow your state laws regarding car seat use.

### American Academy of Pediatrics Recommendations

#### Infants and Toddlers

Should ride in a rear-facing car seat as long as possible, until they reach the highest weight or height allowed by their seat.

#### Toddlers and Preschoolers

Once they are facing forward, children should use a forward-facing car seat with a harness for as long as possible, until they reach the height and weight limits for their seats.

*continued on next page*

### School-Aged Children

Once they have outgrown their forward-facing car seat, children should use a belt-positioning booster seat until the vehicle's lap and shoulder seat belt fits properly. This is often when they have reached at least 4 feet 9 inches in height and are 8 to 12 years old.

### Older Children

All children younger than 13 years should be restrained in the rear seats of vehicles for optimal protection.



### REAR-FACING

**5-30 lb** (2.3-13.6 kg) **and 32 in.** (81.3 cm) **or less in height**

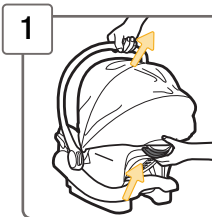
Children under 1 year of age must ride **Rear-Facing**.

**This car seat can only be used Rear-Facing.**

**Your child can remain in this car seat until they outgrow any one of the following:**

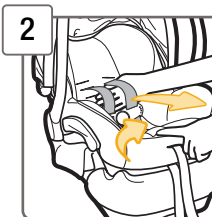
- **Weight Limit: 30 lb** (13.6 kg); **OR**
- **Height Limit: 32 in.** (81.3 cm); **OR**
- **Rear-Facing Child Fit** requirements, see page 10

## Preparing Car Seat for Child Fit



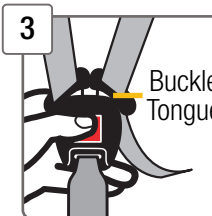
### 1 Remove Car Seat From Base

From the back of the car seat, slide the base release handle up and lift the car seat out of the base.



### 2 Fully Loosen Harness Straps

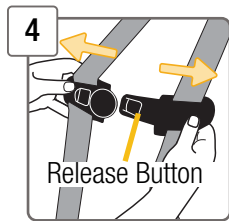
Push down on the harness release lever (through the opening in the pad) while pulling out on the harness straps as shown.



### 3 Unbuckle Harness

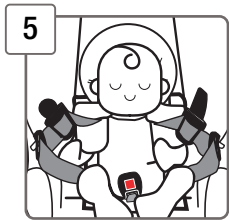
Press in on the red button and pull out the buckle tongues.

*continued on next page*



#### 4 Release Chest Clip

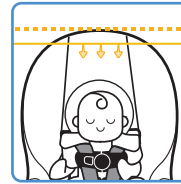
Hold each side of the chest clip and press on the release button with your thumb and pull apart.



#### 5 Place Child in Car Seat to Determine Proper Harness Fit

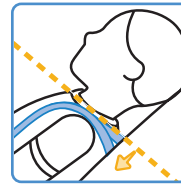
The child's bottom and back should be flat against the car seat.

For **Rear-Facing** child fit, see page 10.



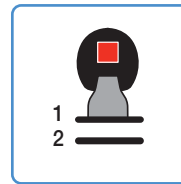
#### Head Position

The top of your child's head **must be at least 1 in. (2.5 cm) below** the top of the car seat.



#### Harness Strap Position

The harness strap **must be at or slightly below** the shoulders; **never above**.



#### Buckle Position

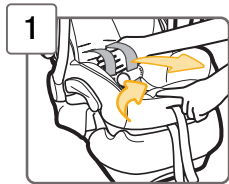
Choose the slot closest to your child.  
The buckle **should not be underneath or behind** your child.

**Need to make adjustments?**

**To change harness height**, see pages 11-12.

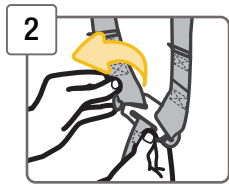
**To change buckle position**, see pages 13-15.



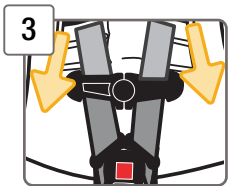


### 1 Fully Loosen Harness Straps

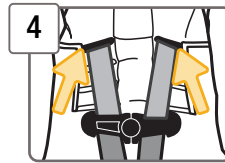
Push down on the harness release lever (through the opening in the pad) while pulling out on the harness straps as shown.



### 2 From Back of Car Seat, Remove Harness Strap Loops From Splitter Plate

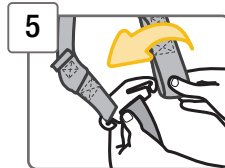


### 3 Pull Harness Strap Out of Shoulder Harness Slots



### 4 Rethread Harness Strap Into Correct Shoulder Harness Slots For Your Child

Make sure the shoulder harness slots in the pad are correctly lined up with the same shoulder harness slots in the shell. For **Rear-Facing** child fit, see page 10.

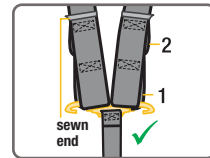


### 5 Attach 1st Harness Strap Loops to Splitter Plate

The sewn ends of the harness strap loops **must** face towards you.

**Do not** twist the harness strap or the harness adjustment strap.

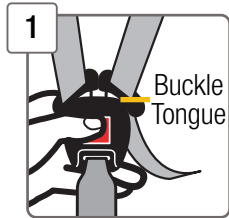
Make sure the **same** harness strap loops are fitted **completely** on both sides of the splitter plate.



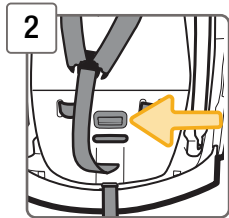
Check your child's fit often. If you cannot achieve a snug harness fit for your child, see pages 16-19.

To learn how to check harness tightness, see pages 26-28.

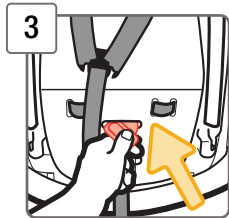
Check the harness straps often for any wear or damage.

**Unbuckle Harness**

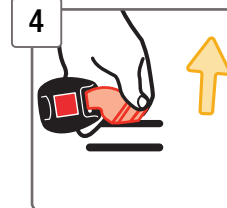
Press in on the red button and pull out the buckle tongues.

**Turn Car Seat Over**

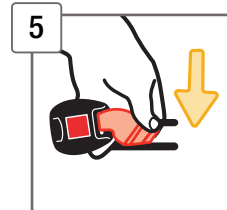
Locate the buckle's metal retainer on the bottom of the shell.



**Rotate Metal Retainer and Push It Up Through Shell and Pad**

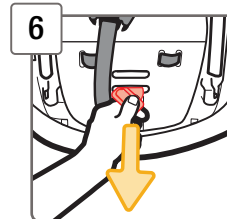


**From Top of Car Seat, Pull Buckle Out of Shell and Pad**



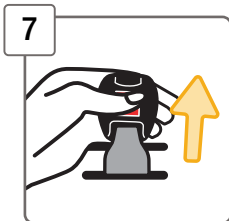
**Insert Buckle's Metal Retainer into Buckle Slot Closest to Your Child**

The buckle **must** face out.



**From Bottom of Car Seat, Pull Buckle's Metal Retainer Completely Through Pad and Shell**

*continued on next page*



### 7 Check Buckle

Pull up on the buckle to make sure it is secured.  
The buckle **must not** pull out.

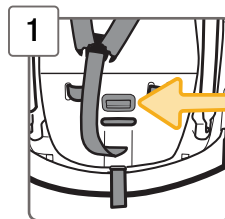
Check your child's fit often. If you cannot achieve a snug harness fit for your child, see pages 16-19.

To learn how to check harness tightness, see pages 26-28.

**⚠** Failure to place buckle's metal retainer completely through pad and shell can result in serious injury or death.

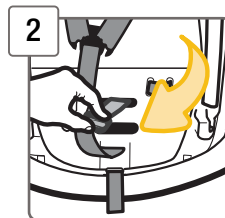
## Harness System Adjustments for Smaller Infants

If you cannot achieve a snug harness fit for your child, make these adjustments.

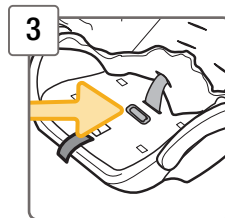


**1 With Buckle in the 1st Slot As Shown, Turn Car Seat Over**

If you need to move the buckle to the 1st slot, see pages 13-15.

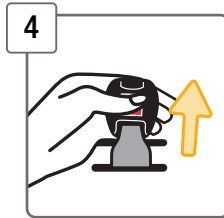


**2 From Bottom of Car Seat, Pull Metal Retainer Towards You and Push It Up into 2nd Slot As Shown**



**3 From Top of Car Seat, Lift Pad Up and Lay the Metal Retainer Flat Against Shell As Shown**

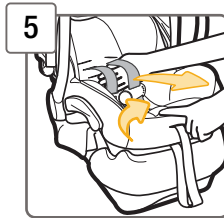
*continued on next page*



#### 4 Replace Pad and Check Buckle

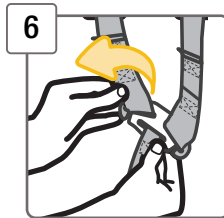
Pull up on the buckle to make sure it is secured.

The buckle **must not** pull out.

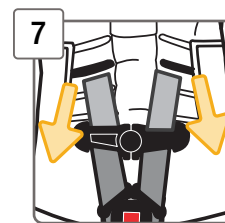


#### 5 Fully Loosen Harness Straps

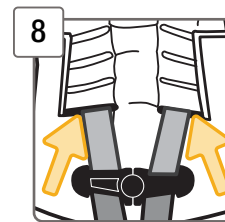
Push down on the harness release lever (through the opening in the pad) while pulling out on the harness straps as shown.



#### 6 From Back of Car Seat, Remove Harness Strap Loops From Splitter Plate



#### 7 Pull Harness Strap Out of Shoulder Harness Slots

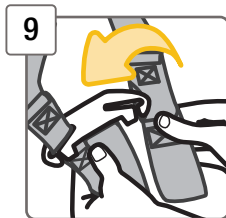


#### 8 Rethread Harness Strap Into Correct Shoulder Harness Slots For Your Child

Make sure the shoulder harness slots in the pad are correctly lined up with the same shoulder harness slots in the shell.

For **Rear-Facing** child fit, see page 10.

*continued on next page*

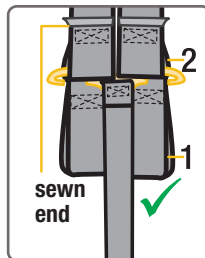


### 9 Attach 2nd Harness Strap Loops to Splitter Plate As Shown

The sewn ends of the harness strap loops **must** face towards you.

**Do not** twist the harness strap or the harness adjustment strap.


Make sure the **same** harness strap loops are fitted **completely on** both sides of the splitter plate.



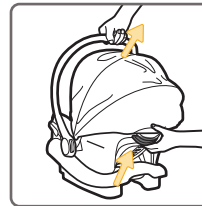
Check your child's fit often.

To learn how to check harness tightness, see pages 26-28.

Check the harness straps often for any wear or damage.

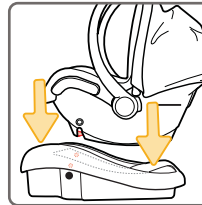
 The harness system must be installed correctly. Do not use a child restraint with damaged harness straps.

## Removing and Installing Car Seat to Base



### To Remove Car Seat from Base

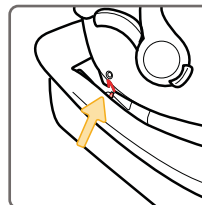
From the back of the car seat, slide the base release handle up and lift the car seat out of the base.



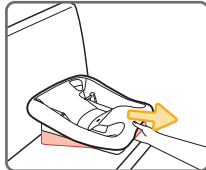
### To Attach Car Seat to Base

Align the slots on the sides of the car seat with the lock bars in the base.

Push down firmly on the carry handle and the front of the car seat to lock it to the base. You will hear a "click" when it is locked.



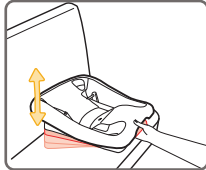
Pull up on the front two corners of car seat by your child's feet to make sure it is locked to the base.



### Adjusting Base

The base has multiple positions.

From the front of the base, squeeze the base recline handle and lift or lower the front of base.

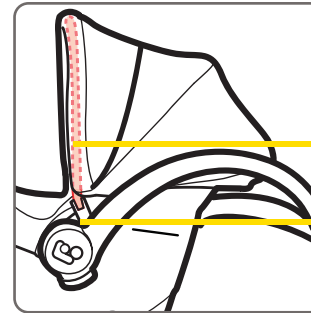


When installing with the base, you may have to adjust the base to get the right recline angle.

### Cleaning Canopy

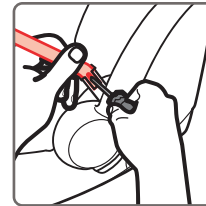
Hand wash using warm sudsy water. Line dry.

### Canopy Parts



**Canopy Hoop**  
(plastic strip)

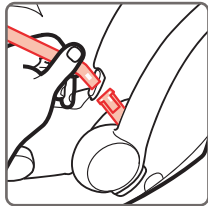
**Canopy Post**



### To Remove Canopy

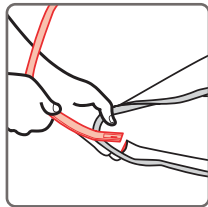
Using a screwdriver, press in on the canopy tab locks on the canopy post and pull the canopy hoop off of the posts. Pull the canopy hoop out of the canopy.

*continued on next page*

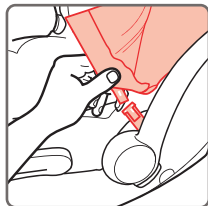


### To Install Canopy

The canopy hoop has an angle that will make the canopy lean forward when installed. Make sure the angle is correct when you thread the canopy hoop into canopy.



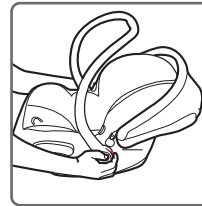
### Thread Canopy Hoop Completely Through Channel on the Front Edge of Canopy



### Attach Canopy

Fit the back of the canopy over the back of the shell.

Snap each plastic strip end to each canopy post.

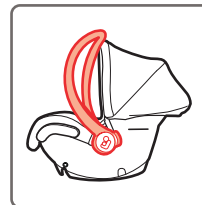


### To Adjust Carry Handle

Squeeze both of the adjustment buttons on each side of the carry handle.

Rotate the carry handle up or down to the desired location. Release the buttons.

Make sure both carry handle adjustment buttons are in the locked position.



**The carry handle must be upright AND locked when carrying and when installed in the vehicle.**

*continued on next page*

## WARNINGS

Read ALL instructions before using child restraint as a carrier.

**NEVER** use carrier unless child is properly secured.

Use only as a carrier by children weighing 5-30 pounds (2.3-13.6 kg) and 32 inches (81.3 cm) or less in height.

**NEVER** leave child unattended. Always keep child within arm's reach.

**Suffocation Hazard:** Infant carrier can roll over on soft surfaces and suffocate child. **NEVER** place carrier on beds, sofas or other soft surfaces.

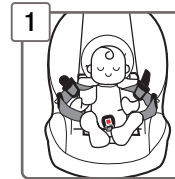
**Strangulation Hazard:** Children have **STRANGLED** in loose or partially buckled harness straps. Fully restrain the child even when carrier is used outside the vehicle.



**Fall Hazard:** Child's movement can slide carrier. **NEVER** place carrier on counter tops, tables, or any other elevated surface.

The carrier can fall from the shopping cart. Do not use on shopping cart.

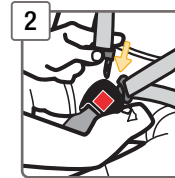
Do not use the carrier if it is damaged or broken, or if any parts are missing.



### 1 Place Child in Car Seat

The child's bottom and back should be flat against the car seat.

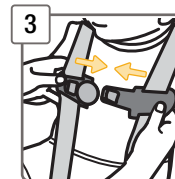
Position the harness straps over your child's shoulders and upper thighs.



### 2 Buckle Harness

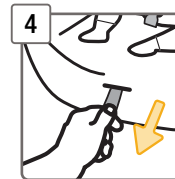
Push the buckle tongues into the buckle until you hear them "click".

Pull up on the harness straps to make sure the buckle is locked.



### 3 Fasten Chest Clip

Insert the right half of chest clip into the left half and snap together.



### 4 Tighten Harness

Pull straight out on the harness adjustment strap to tighten the harness snugly.

*continued on next page*

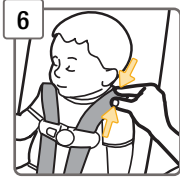




5

### Position Chest Clip

Slide the chest clip up the harness straps and position it at mid-chest (even with armpits) and away from your child's neck.



6

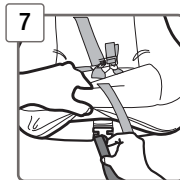
### Check Harness Tightness

Try to pinch the harness at the shoulders vertically between index finger and thumb as shown.

**If your fingers slip off**, the harness is tight enough.

**If you can pinch the harness strap**, tighten more.

A snug strap should not allow any slack. It lies in a relatively straight line without sagging. It does not press on the child's flesh or push the child's body into an unnatural position.



7

### Attach Harness Adjustment Strap Loop to Shell

Pull the pad up at the front of the shell. The end of the harness adjustment strap has a loop. Slide one side of the loop onto one tab and the other side on the other tab. Replace the pad over the front of the shell.



## Finished!

The child is now secured in the car seat.

Check your child's fit often and make any needed adjustments to the car seat as they grow.

### To Remove Child From Car Seat:

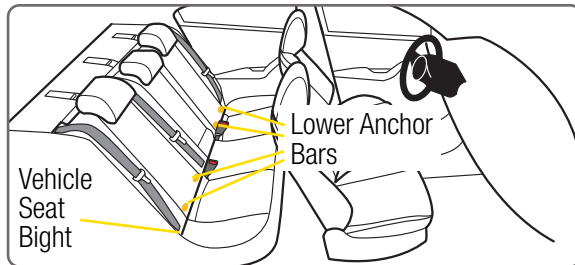
1. Loosen Harness Strap
2. Unbuckle Harness
3. Release Chest Clip
4. Remove Child

**⚠ Failure to fasten and tighten the harness system correctly may allow the child to be ejected from the child restraint in a crash or sudden stop causing serious injury or death.**



**Do not mistake comfort for safety. Harness system must be snugly adjusted.**

**Do not put snowsuits or bulky garments on your child when placing them in the child restraint. Bulky clothing can prevent the harness straps from being tightened properly.**



Your vehicle's features may be considerably different than those pictured here.

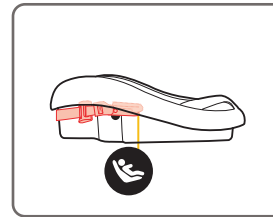
The lower anchors of LATCH (Lower Anchors and Tethers for CHildren) is a universal system for installing car seats without using vehicle seat belts.

The lower anchor can **ONLY** be used in vehicles that have the lower anchor bars installed in designated seating positions. Most vehicles manufactured after September 2002 are equipped with lower anchor bars.

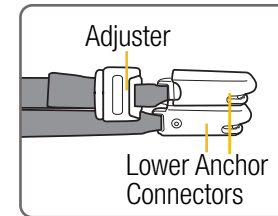
Check your vehicle owner's manual to see which seating positions may be equipped with LATCH: lower anchor bars.

**⚠ Do not use both the lower anchor belt and vehicle belt at the same time.**

**When used correctly the lower anchor belt or vehicle belts are equally safe.**



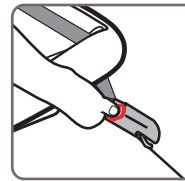
**Lower Anchor Belt Storage Attachment**



**Lower Anchor Belt Parts**

### To Remove Lower Anchor Belt from Storage Location on Base:

Press the red release button on each connector, then pull the connectors off of the storage attachments.

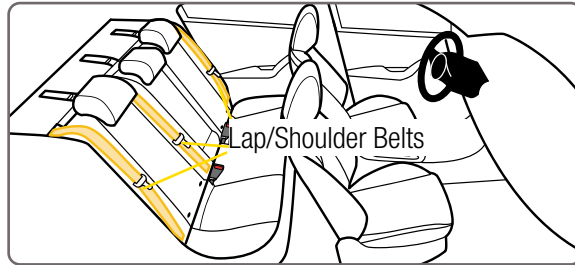


### To Remove Lower Anchor Belt from Vehicle Lower Anchor Bars:

Press the red release button on each connector, then pull the connectors out of the vehicle seat bight.

### To Store Lower Anchor Belt:

**When using the vehicle belts or when the base is not installed in a vehicle,** attach the connectors to the attachments on the base. Gently tighten to remove slack.



Your vehicle's features may be considerably different than those pictured here.

If lower anchors are not an option, you must use the vehicle seat belt system to install the car seat.

**Not all vehicle belts and seating positions will work with car seats.**

**Please go through the following steps to understand how to lock a car seat with a vehicle belt.**



1



### You Must Review Your Vehicle Owner's Manual

Your vehicle owner's manual will let you know which vehicle belts and seating positions car seats can be installed in.

2



### Determine How This Car Seat Will Be Locked Into Place

The vehicle belt **must not** loosen after tightening. This means there needs to be a way to lock the vehicle belt.

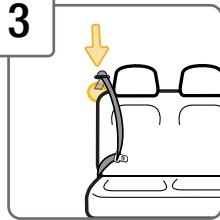
The ways this can be done are:

- By using the seat belt's retractor (see step 3); **OR**
- By using the seat belt's latch plate (see step 4).

*continued on next page*



3



### Check Retractor

Retractors pull seat belts into stored positions and lock the belt to hold passengers in place.

See the next page for some common types of vehicle belt retractors that will work with this car seat.

### Types of Retractors

<b>Switchable Retractor</b> (most vehicles have this type)	
---	--



This retractor can be switched to a locking mode.

You **must have the retractor in the locking mode** to use the seat belt with this car seat.

**Switching to locking mode:** Slowly pull the shoulder belt all the way out, then let it go back in 1-2 in. (2.5-5 cm).

As it goes back in, you will most likely hear a ratcheting sound.

Gently pull the belt to see if it has locked. You will not be able to pull any more belt out if the lock has engaged.



<b>Automatic Locking Retractor</b>	
------------------------------------	--



This retractor always locks.

It will automatically lock after slowly pulling the seat belt out at least halfway and letting the belt go back into the retractor 1-2 in. (2.5-5 cm).

<b>Emergency Locking Retractor</b>	See Step 4, "Check Latch Plates".
------------------------------------	-----------------------------------

See Step 4, "Check Latch Plates".

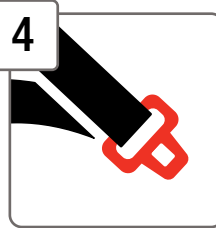
If the retractor does not lock, it is most likely an Emergency Locking Retractor. These retractors only lock during a sudden stop or collision.

You will need to determine if your seat belt's latch plate can lock the belt. See step 4, "Check Latch Plates".

*continued on next page*



4

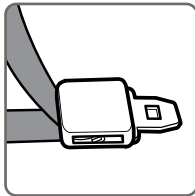


### Check Latch Plates

Latch plates are the part of the seat belt that goes into the buckle.

#### To see if the latch plate locks:

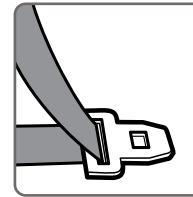
1. Buckle Vehicle Belt
2. Firmly Tug Lap Portion of Seat Belt While Pulling It Up



Locking Latch Plate

If the vehicle belt does not slide through the latch plate, it's locked.

If the latch plate slides up and down the vehicle belt, it is a **sliding latch plate**.



### Emergency Locking Retractor with a Sliding Latch Plate

Sliding latch plates easily slip between the lap and shoulder portions of the belt.

**If you have an Emergency Locking Retractor with a Sliding Latch Plate, you must use a locking clip.**

Please contact us for one.  
See page 81.

### Never Use With This Car Seat

Emergency Locking Retractor  
Lap Only Belt



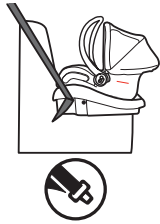
Inflatable Seat Belts



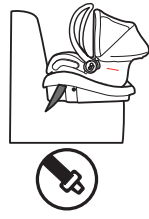


## Rear-Facing Use with Base

**5-30 lb (2.3-13.6 kg) and  
32 in. (81.3 cm) or less in height**



Lap/  
Shoulder Belt



Lap  
Belt



LATCH: Lower  
Anchor Belt



Never install a rear-facing child restraint in the front seat of a vehicle equipped with an active frontal airbag.

Check the vehicle belt or the lower anchor belt before each use. Use only if the belt can be tightened properly and locked securely in place.

Do not fasten multiple lower anchor connectors on the same lower anchor bar in the vehicle.

Child restraint must be securely attached to base.

Even when unoccupied, this child restraint must be firmly secured to the vehicle with a lower anchor belt or with the vehicle seat belt.

This child restraint must always face the rear of the vehicle.



Before you begin installing the seat into your vehicle, did you check:

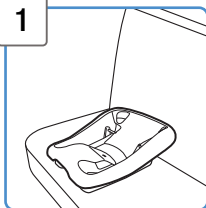


**Your child's weight and height?**  
See page 7.



**Your child's fit? See page 10.**  
Do you need to make adjustments to the harness height or the buckle position?

1

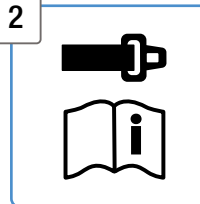


### Place Base in Vehicle

Center the base in the chosen seating position as shown.



2



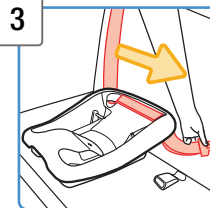
### Check if Your Vehicle Belts Will Work With This Car Seat

This is very important because **not all vehicle belts will work with car seats.**

Review pages 31-36 and your vehicle owner's manual to find out

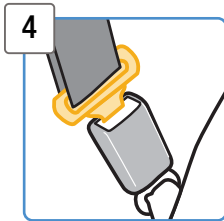
what kind of vehicle belts you have and how to lock a car seat in place.

3



### Route Vehicle Belt Through Base Belt Path

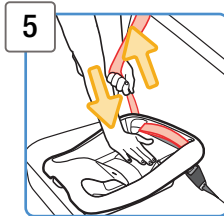
*continued on next page*



#### 4 Buckle Vehicle Belt

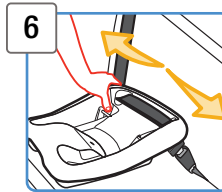
If your car's vehicle belt has a switchable retractor, use it to lock the vehicle belt.

For information about switchable retractors, see page 33 or review your vehicle owner's manual



#### 5 Tighten Belt

Place your hand on the base. Firmly push the base down and towards the vehicle seat back while pulling the shoulder belt or the free end of the lap belt parallel with the base belt path.



#### 6 Check Belt Tightness

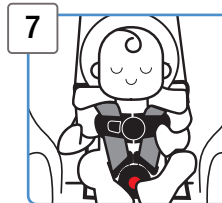
Hold the base at the belt path with your weaker hand.

Push and pull from side to side.

It should not move more than **1 in. (2.5 cm)**.

#### If it moves more than 1 in. (2.5 cm), you can try:

- Reinstalling the base; **OR**
- Changing to a different seating location; **OR**
- Switching to lower anchor belt installation if lower anchors are available in your vehicle



#### 7 Secure Child in Car Seat

To properly secure your child in the car seat, see pages 26-28.

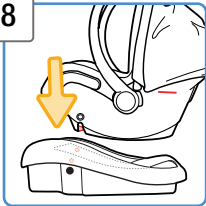
Check your child's fit often and make any needed adjustments to the car seat as they grow.

*continued on next page*





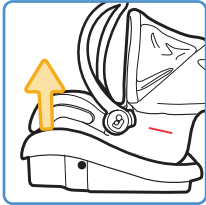
8



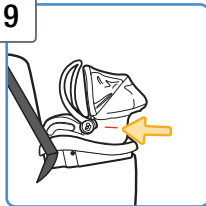
### Attach Car Seat to Base

Pull up on the front two corners of the car seat by your child's feet to make sure it is locked to the base.

**The carry handle must be upright AND locked when carrying and when installed in the vehicle.**

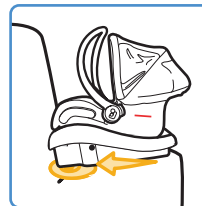


9



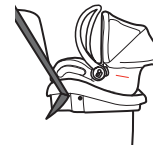
### Recheck Level Line

Redo the installation if level line is not parallel with the ground.



Only if necessary, you may need to place a tightly rolled towel(s) or foam pool noodle(s) under the front of the base to help make the level line parallel with the ground.

Check often to be sure padding is still in place and the belt is tight.



## Finished!

Check the tightness of the install often to make sure it has not loosened.

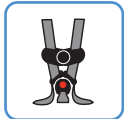


## LATCH: Lower Anchor Install with Base

Before you begin installing the seat into your vehicle, did you check:

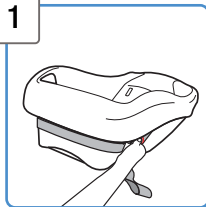


**Your child's weight and height?**  
See page 7.



**Your child's fit?** See page 10.  
Do you need to make adjustments to the harness height or the buckle position?

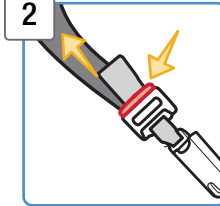
1



### Remove Lower Anchor Belt from Storage Location

Unhook the lower anchor connectors from the base by pressing the red release button on each connector.

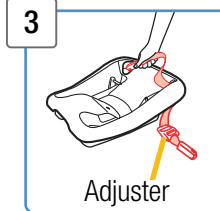
2



### Loosen Lower Anchor Belt

Only 1 connector has an adjuster. Push the adjuster's button and pull the belt to loosen.

3

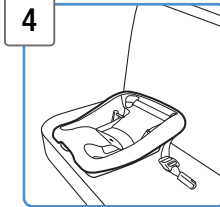


### Route Lower Anchor Belt Through Base Belt Path

The LATCH: Lower Anchor belt adjuster **must be** on the right side of the base as shown.

**Do not twist belt.**

4

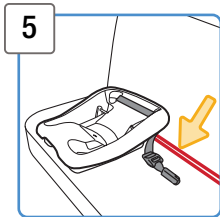


### Place Base in Vehicle

Center the base in the chosen seating position as shown.



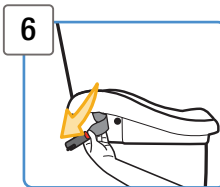
*continued on next page*



5

### Locate Vehicle's Lower Anchor Bars

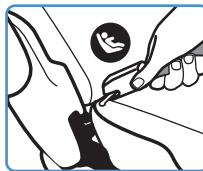
Review your vehicle owner's manual for lower anchor locations and lower anchor belt use.



6

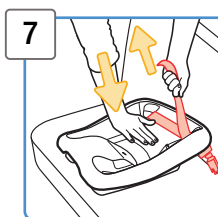
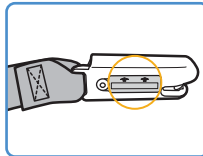
### Attach Lower Anchor Connectors to Vehicle's Lower Anchors

Make sure the arrows on connectors are facing up.



Fasten one lower anchor belt connector to the anchor located in the vehicle seat bight.

**Repeat for the other side of base.**

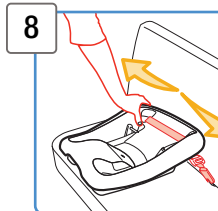


7

### Tighten Belt

Place your hand on the base.

Firmly push the base down and towards the vehicle seat back while pulling the free end of the belt parallel with the base belt path.



8

### Check Belt Tightness

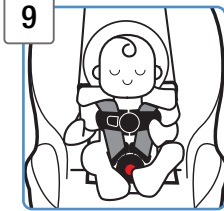
Hold the base at the belt path with your weaker hand.

Push and pull from side to side. It should not move more than **1 in. (2.5 cm)**.

**If it moves more than 1 in. (2.5 cm), you can try:**

- Pulling the belt tighter; **OR**
- Reinstalling the car seat; **OR**
- Changing to a different seating location; **OR**
- Switching to vehicle belt installation

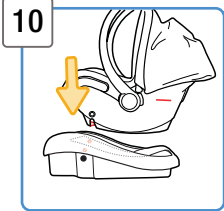
*continued on next page*



### Secure Child in Car Seat

To properly secure your child in the car seat, see pages 26-28.

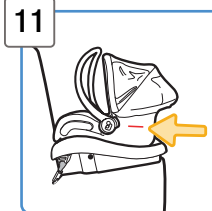
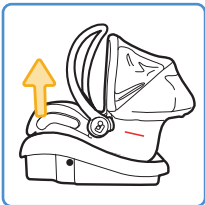
Check your child's fit often and make any needed adjustments to the car seat as they grow.



### Attach Car Seat to Base

Pull up on the front two corners of the car seat by your child's feet to make sure it is locked to the base.

**The carry handle must be upright and locked when carrying and when installed in the vehicle.**

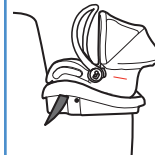


### Recheck Level Line

**Redo the installation if level line is not parallel with the ground.**



Only if necessary, you may need to place a tightly rolled towel(s) or foam pool noodle(s) under the front of the base to help get the correct recline. Check often to be sure padding is still in place and the belt is tight.



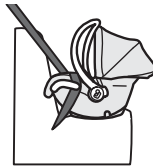
### Finished!

Check the tightness of the install often to make sure it has not loosened.

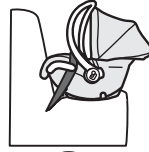


## Rear-Facing Use Without Base

**5-30 lb (2.3-13.6 kg) and  
32 in. (81.3 cm) or less in height**



Lap/Shoulder Belt



Lap Belt



**Never install a rear-facing child restraint in the front seat of a vehicle equipped with an active frontal airbag.**

**Check the vehicle belt before each use. Use only if the belt can be tightened properly and locked securely in place.**

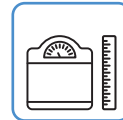
**Even when unoccupied, this child restraint must be firmly secured to the vehicle with the vehicle seat belt.**

**This child restraint must always face the rear of the vehicle.**

## Vehicle Belt Install Without Base



**Before you begin installing the seat into your vehicle, did you check:**



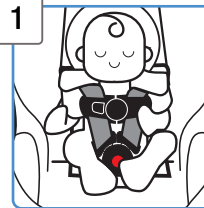
**Your child's weight and height?**  
See page 7.



**Your child's fit? See page 10.**

Do you need to make adjustments to the harness height or the buckle position?

1

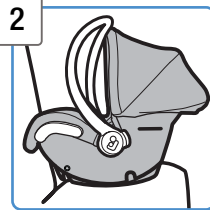


### Secure Child in Car Seat

To properly secure your child in the car seat, see pages 26-28.

Check your child's fit often and make any needed adjustments to the car seat as they grow.

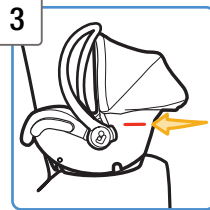
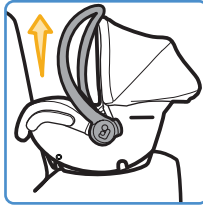
*continued on next page*



### 2 Place Car Seat in Vehicle Rear-Facing

Center the car seat in the chosen seating position.

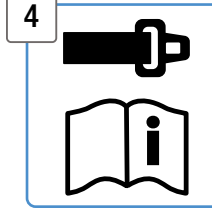
The carry handle must be upright and locked when carrying and when installed in the vehicle.



### 3 Check Level Line

Check the level line on the side of shell to see if it is parallel with the ground.

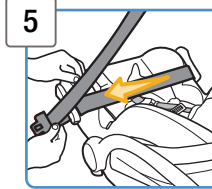
Adjust if needed.



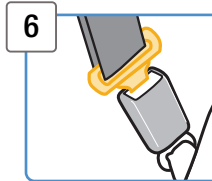
### 4 Check if Your Vehicle Belts Will Work With This Car Seat

This is very important because **not all vehicle belts will work with car seats.**

Review pages 31-36 and your vehicle owner's manual to find out what kind of vehicle belts you have and how to lock a car seat in place.



### 5 Route Vehicle Lap or Lap/Shoulder Belt Through Shell Belt Path on Both Sides of Shell As Shown

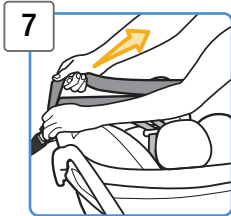


### 6 Buckle Vehicle Belt

If your car's vehicle belt has a switchable retractor, use it to lock the vehicle belt.

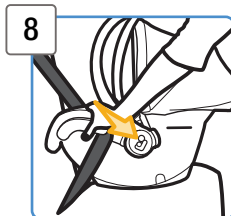
For information about switchable retractors, see page 33 or review your vehicle owner's manual

*continued on next page*



### Tighten Belt

Lay your forearm across the car seat at the belt path while pulling the shoulder belt or the free end of the lap belt to tighten.



### Check Belt Tightness

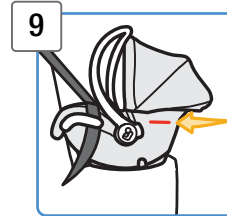
Hold the car seat at the belt path with your weaker hand.

Push and pull from side to side.

It should not move more than **1 in. (2.5 cm)**.

**If it moves more than 1 in. (2.5 cm), you can try:**

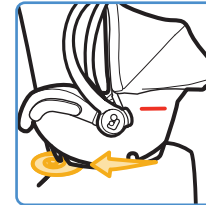
- Pulling the belt tighter; **OR**
- Reinstalling the car seat; **OR**
- Changing to a different seating location



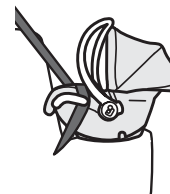
### Recheck Level Line

**Redo the installation if level line is not parallel with the ground.**

Only if necessary, you may need to place a tightly rolled towel(s) or foam pool noodle(s) under the front of the car seat to help make the level line parallel with the ground.



Check often to be sure the padding is still in place and the belt is tight.



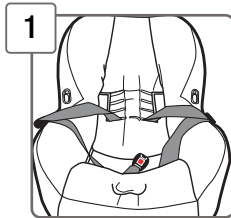
### Finished!

Check the tightness of the install often to make sure it has not loosened.

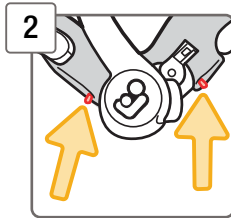
## Removing Seat Pad Set for Cleaning

You do not need to remove the harness system to remove the pad.

To remove accessories, see pages 4-5.

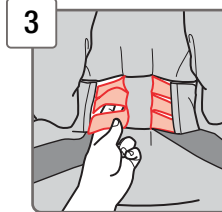


**1** Release Chest Clip and Buckle

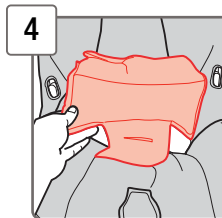


**2** Pull Pad off Pad Tabs

To release the pad from the tab, pull down on the pad and pull the pad off the tab.  
Repeat for the other side.

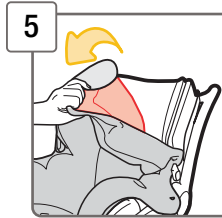


**3** Pull Shoulder Harness Pad Slots Out From Behind Plastic Strip in Pad As Shown



**4** Pull Back Panel of Pad Forward As Shown

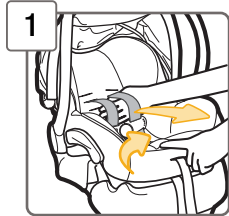
Pull the buckle down through the slot in the pad.  
Push the harness strap behind the panel.



**5** From Top Of Car Seat, Pull Pad Off of Shell

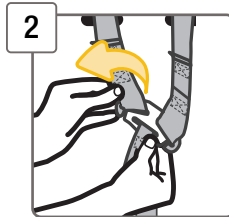
Pull the buckle and the harness adjustment strap through the pad.



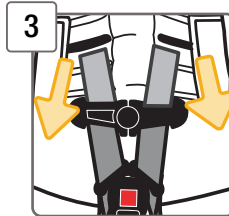


### 1 Fully Loosen Harness Strap

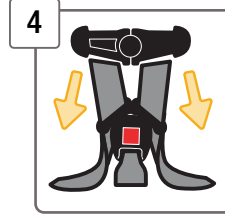
Push down on the harness release lever (through the opening in the pad) while pulling out on the harness strap as shown.



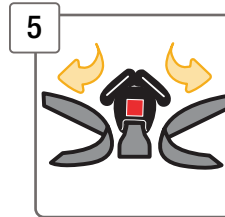
### 2 From Back of Car Seat, Remove Harness Strap Loops From Splitter Plate



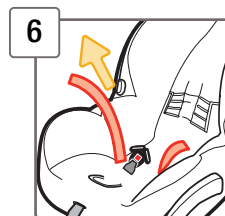
### 3 Pull Harness Strap Out of Shoulder Harness Slots



### 4 Unthread Chest Clip

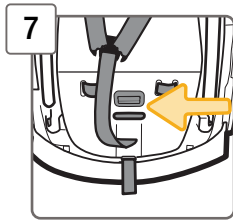


### 5 Unthread Buckle Do not unbuckle.



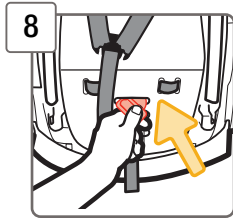
### 6 Pull Harness Strap Out of Hip Harness Slots

*continued on next page*

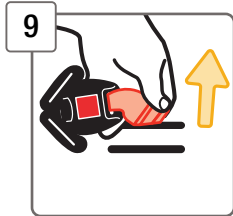


### Turn Car Seat Over

Locate the buckle's metal retainer on the bottom of the shell.



### Rotate Metal Retainer and Push It Up Through Shell and Pad



### From Top of Car Seat, Pull Buckle Out of Shell And Pad

## Cleaning Parts of Car Seat and Installing Seat Pad Set

### Cleaning Pad and Accessories

Machine wash separately with cold water on a gentle cycle. Do not use bleach. Tumble dry separately for 10-12 minutes on low heat. Remove immediately.

### Cleaning Harness Strap

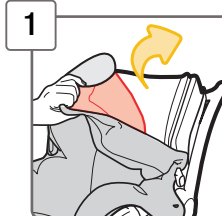
**Check the harness straps often for any wear or damage.**

Spot clean using warm sudsy water and damp cloth. Spilled food and liquids on the car seat may result in mold or bacterial growth over time. These spills could also attract insects or rodents.

### Cleaning Buckle & Car Seat Shell

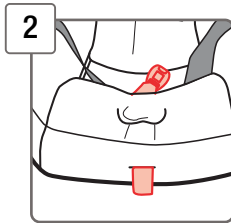
Spot clean using warm sudsy water and damp cloth. Do not submerge into water.

**⚠ Do not use the child restraint without the seat pad or with damaged harness straps.**

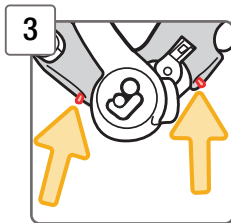


### Starting From Bottom of Car Seat, Slip Pad on Shell and Wrap Around Top of Shell

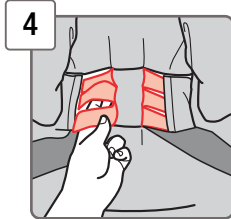
*continued on next page*



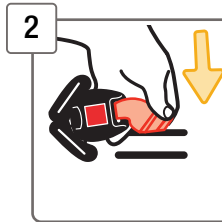
**2** Pull Harness Adjustment Strap and Buckle Through Slots in Pad



**3** Attach Pad to Tabs on Both Sides of Shell

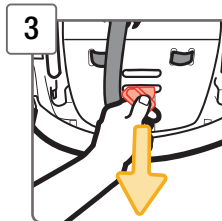


**4** Tuck Pad Behind Harness Strap  
Thread the harness strap into the shoulder harness slots in the pad and push the slits behind the plastic strip in the pad.

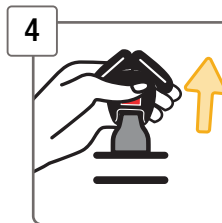


**2** Insert Buckle's Metal Retainer into Buckle Slot Closest to Your Child

The buckle **must** face out.



**3** Pull Buckle's Metal Retainer Completely Through Pad and Shell

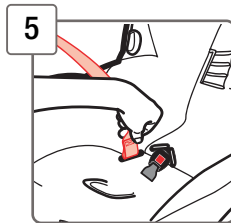


**4** Check Buckle

Pull up on the buckle to make sure it is secured.

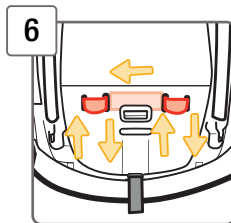
The buckle **must not** pull out.

*continued on next page*

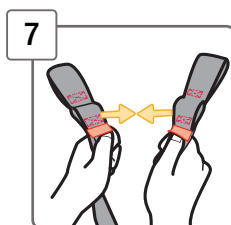


### 5 Thread Harness Strap

With the sewn end of the harness strap loop facing the buckle, thread the harness strap down through the hip harness slot.

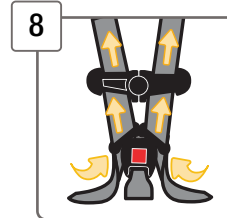


### 6 Lift Up Front of Pad and Weave Harness Strap In and Out of Shell As Shown



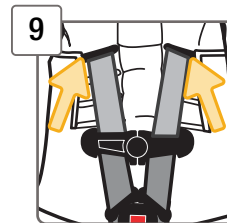
### 7 Make Harness Strap Even

The sewn ends of the harness strap loops **must** face each other.



### 8 Thread Buckle and Chest Clip

The harness strap ends go through the back of the buckle tongues and through the chest clip, front to back as shown.

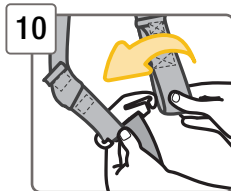


### 9 Rethread Harness Strap Into Correct Shoulder Harness Slots For Your Child

Make sure the shoulder harness slots in pad are correctly lined up with the same shoulder harness slots in shell.

For **Rear-Facing** child fit, see page 10.

*continued on next page*

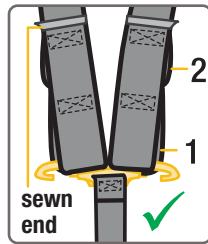


10

### Attach 1st Harness Strap Loops to Splitter Plate

The sewn ends of the harness strap loops **must** face towards you.

**Do not** twist the harness strap or the harness adjustment strap.




Make sure the **same** harness strap loops are fitted **completely on both sides** of the splitter plate.

Check your child's fit often.

If you cannot achieve a snug harness fit for your child, see pages 16-19.

To learn how to check harness tightness, see pages 26-28.

Check the harness straps often for any wear or damage.

 The harness system must be installed correctly. Do not use a child restraint with damaged harness straps.



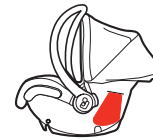
This restraint is certified for aircraft use.

Install the car seat in a window seat to avoid blocking the aisle. If the aircraft lap belt is too short, ask the flight attendant for a belt extender.

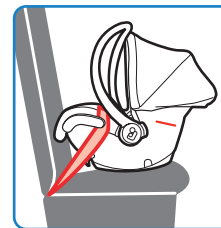
Use only on forward-facing aircraft seats.

Contact the airline for their specific policies.

Some airlines may ask to see a label stating that this car seat is certified for aircraft use.



There is an airplane certification label located on the side of this car seat as shown.



### Rear-Facing Aircraft Installation without Base

Follow pages 52-56.

You can only install this child restraint in the aircraft without the base.

## Replacement and Expiration of Car Seat

### Do not risk your child's safety.

To keep your child as safe as possible, Dorel Juvenile Group strongly recommends replacing the car seat even after a minor crash; even if it was not occupied at the time.

### Replacement After a Minor Crash

The National Highway Traffic Safety Administration states that for a crash to be considered minor **ALL of the following must be true:**

- Vehicle able to drive away from the crash site; **AND**
- Vehicle door nearest the car seat was not damaged; **AND**
- No passengers were injured; **AND**
- Airbags did not deploy; **AND**
- There is no visible damage to the car seat.

If the crash your car seat was involved in meets **ALL** the criteria, you may not need to replace the car seat.

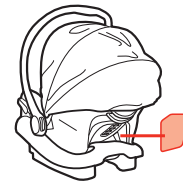
If one or more of these criteria are not true or if you are uncertain of any of your answers, replace the car seat immediately.

### Replacement After a Moderate to Severe Crash

You **must** replace this car seat if it has been in a moderate to severe car crash.

This car seat is intended to protect a child in a single crash.

During a crash, the car seat and all of its parts absorb crash energy which can deform or weaken it. Damage is not always visible. A damaged car seat must be replaced immediately.



### Expiration

On the back of the car seat there is a date of manufacture label as shown.

Do not use this car seat more than 8 years after the date of manufacture.



### Child Restraint Use

Never take your child out of the child restraint while the vehicle is moving.

Never leave child unattended.

Placing your child in a hot child restraint may result in burns.

Do not use a child restraint with damaged or missing parts.

Do not use a child restraint with cut, frayed, or damaged harnesses.

Do not substitute parts or try to modify the child restraint in any way.

Do not lubricate buckles and fasteners.

Do not use any child restraint accessory except those approved by Dorel Juvenile Group.

Never allow any child to play with this child restraint; it is not a toy.

Do not remove or cover up any of the warning labels or other labels on the child restraint.

This child restraint has been certified for use in passenger vehicles. Do not use in a boat, on a motorcycle or in a cargo van or bus where there are no seat belts.

Read all instructions for additional warnings.



### Installation in Vehicle

Check the vehicle belt or LATCH: lower anchor belt before each use. Use only if the belt can be tightened properly and locked securely in place.

Even when unoccupied, this child restraint must be firmly secured to the vehicle with a lower anchor belt or with the vehicle seat belt. In a crash or sudden stop, an unsecured child restraint could injure occupants.

### Vehicle Seating Position



Never place a child rear-facing in a seating position with an active frontal air bag.



Check the vehicle owner's manual for more information about air bag/child restraint use.



Use the child restraint only on vehicle seats that face forward.

Do not use on seats that face the sides or rear of the vehicle.

For vehicles without a back seat, refer to your vehicle owner's manual.

*continued on next page*



**Children are safer when properly restrained in rear seating positions than in the front seating positions.**

**According to accident statistics, children in rear seating positions are statistically safer, whether you have air bags, advanced air bags, or no air bags at all.**

**If you are not sure where to place the child restraint in your vehicle:** consult your vehicle owner's manual; contact Dorel Juvenile Group Consumer Care Department; or visit your local Child Passenger Inspection Station. Go to <http://www.safercar.gov/cpsApp/cps/index.htm> to find your closest station.

**To avoid your child being seriously burned, take the following precautions:**

1. Park in the shade or where sun does not directly hit the child restraint.
2. Cover the child restraint with a sheet or blanket when not in use.
3. Check for hot seat and buckles before placing child in child restraint.

To help protect your vehicle seat's upholstery from damage, use a single layer towel underneath and behind child restraint.

**1. If the child restraint buckle or harness release lever sticks or you cannot get the straps tight enough around child:**

**DO NOT LUBRICATE.** Check around lever and retractor for dropped food, sticky spilled drinks, dirt, leaves, etc. Clean with warm water and/or remove object with tweezers. If you cannot get the harness to adjust and remain tight with the buckle securely locked, do not use the child restraint.

**2. If your harness twists:**

Straighten the harness each time you put your child in the child restraint to help prevent twisting. Lock the buckle and tighten harness so it will be ready for next use.






Please complete the postage-paid registration card that came with your child restraint, and send it to us.

Child restraints could be recalled for safety reasons. You must register this restraint to be reached in a recall. Send your name, address, e-mail address if available and the restraint's model number and manufacturing date to:

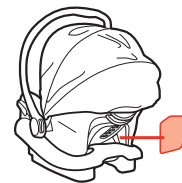
**Dorel Juvenile Group**  
2525 State Street  
Columbus, IN 47201

or call 1-800-951-4113 or register online at:  
[www.djgusa.com/registration/carseat/us](http://www.djgusa.com/registration/carseat/us).

For recall information, call the U.S. Government's Vehicle Safety Hotline at 1-888-327-4236 (TTY: 1-800-424-9153), or go to <http://www.NHTSA.gov>.

Your Name		
Your Street Address		
City	State	Zip Code
Email Address (optional)		
Model Number	Model Name	Manufacture Date
AB123CDE	MAXI-COSI CAR SEAT	01/22/2015
		
L#11 B265035		

**Example of model number, line code, and manufacture date.**



If you don't have the card or if your address changes, you will find the model number, manufacture date, and line code on the label located on the back of the shell.

Dorel Juvenile Group, Inc. (DJG) warrants this product to the original retail purchaser as follows: This product is warranted against defective materials or workmanship for one year from the date of original purchase. **An original receipt is required to validate your warranty.** DJG will, at its option, provide replacement parts or replace this product. DJG reserves the right to substitute if the part or model has been discontinued.

To make a claim under this warranty contact our Consumer Care Department by phone at 1-800-951-4113; or text us at 1-812-652-2525. Our hours of operation are from 8:00 a.m. to 6:00 p.m. EST Monday through Thursday and from 8:00 a.m. to 4:30 p.m. on Friday.

**Proof of purchase is required and shipping charges are the responsibility of the consumer.**

**Warranty Limitations:** This warranty does not include damages which arise from misuse or abuse of this product.

**Limitation of Damages:** The warranty and remedies as set forth are exclusive and in lieu of all others, oral or written, expressed or implied. In no event will DJG or the dealer selling this product be liable to you for any damages, including incidental or consequential damages, arising out of the use or inability to use this product.

**Limitation of warranties and other warranty terms and state law rights:** Any implied warranties, including implied warranties of the merchantability and fitness for a particular purpose, shall be limited to the duration and terms of the express written warranty. Some states do not allow limitations as to how long an implied warranty lasts or the exclusion or limitation of incidental or consequential damages, so the above limitations may not apply to you.

This warranty gives you specific legal rights, and you may have other rights, which vary from state to state. Neither DJG nor the dealer selling this product authorized any person to create for it any other warranty, obligation, or liability in connection with this product.

**Please note:** Our product warranty only applies when purchased from an authorized Maxi-Cosi retailer. The origin of products not purchased through these authorized retailers is unknown and could be counterfeit.

We cannot support products from an unknown origin as we cannot verify the handling or condition of such merchandise. We maintain a strong network of authorized retailers to ensure you are purchasing safe and complete products.

Fulfillment by a third party does not guarantee you are purchasing from one of these authorized retailers.

Pricing which is inconsistent with the majority of retailers is a strong indication that the retailer is not authorized, as we have a consistent price offering across all authorized retailers.

If you are unsure of the authorization status of a retailer you are considering purchasing from, or have purchased from, you can check [www.maxicosi.com/us-en/shops.aspx](http://www.maxicosi.com/us-en/shops.aspx); or call our Consumer Care Department at 1-800-951-4113; or text us at 1-812-652-2525.

## Replacement Parts List

Chest Clip	Lower Anchor Belt
Buckle Assembly	Harness Straps
Seat Pad Set	Instructions
Base	Locking Clip

**If requested color is not available, similar color will be substituted.**

**Applicable tax and shipping & handling will also be added.**

**For parts availability and questions,**

**Call:** 1-800-951-4113

**Text:** 1-812-652-2525

**Chat:** [www.maxicosi.com](http://www.maxicosi.com)

**If you already know which parts you need,** you may complete your order with a credit card by calling us at 1-800-544-1108.

**We accept Visa or MasterCard.**

**Hours of Operation:**

M-TH: 8:00 AM - 6:00 PM EST

FRI: 8:00 AM - 4:30 PM EST

## Dorel Juvenile Group Information

Thank you for choosing this car seat, also known as a child restraint. The DJG family is committed to creating car seats with the most comfort and convenience available today.

Remember, parents are a child's first teachers and examples. If you always buckle your seat belt, your child will think it is the natural thing to do. Make it a firm rule that the vehicle does not go until everyone is buckled up. Make no exceptions.

No one can predict if use of a car seat will prevent injury or death in a particular crash. However, when combined with careful driving, proper use of a car seat can lower a child's risk of injury or death in most crashes.

If you have questions or any concerns with this car seat, please contact our Consumer Care Department:

**Call:** 1-800-951-4113

**Text:** 1-812-652-2525

**Website:** [www.maxicosi.com](http://www.maxicosi.com)

**Hours of Operation:**

M-TH from 8:00 AM to 6:00 PM EST

FRI from 8:00 AM to 4:30 PM EST